



## COMMODORE'S REPORT

Any who visited the Club one year ago will recall the devastation to the Dock facilities wrought by the January 26th, 1978 storm and the resultant high ice level. Fortunately, at least to date (Feb. 5, 1979), we have been experiencing relatively speaking, a significantly milder winter and no obvious dock damage. V.C. Schwab's relationship with the weather maker is to be commended - may it continue until Spring.

Words of commendation are in order also for those dedicated individuals who have, through their efforts, provided real enjoyment to all who chose to participate. Specifically appreciation is extended to Marge and Bill Behr and Dottie and Frank Knauer for a tremendous New Year's Eve Dinner Dance - and to Dot and Ray Bujalski, Delphine and John Kabasinski and Berd and Greg Weislogel for the hilarious First Annual Hobo Party on Feb. 3rd. Guthrie and Bob Pratt's

choice of assistants has been outstanding.

The New Year's Day "Tom & Jerry" Meet Your Officers" festivity also was a resounding success, thanks to the efforts of those perennial stalwarts, Chet Curriden, Gib Loesel and Ken Smith, assisted by Marty. For any and all who requested Chet's secret formula, you will find the recipe elsewhere in this issue, with Chet's admonition on its proper preparation and use.

The Hobo Party, despite the excellent committee effort, was rather sparsely attended. A date conflict with the Erie Philharmonic was partially the cause, together perhaps with winter apathy. The next affair to be held will be a St. Patrick's Dinner Dance, March 17, 1979. Please reserve now to insure your spot.

Again I encourage all of our members and their guests to utilize the entire Club. This includes the house (galley and bar) as well as the yacht facilities. The Club's failure to realize a more optimum house return is not unique for either EYC or similar private Clubs. To quote from a 1969 report prepared for EYC by Wm. P. Fisher, Phd. of Guernier Associates: "As you are well aware, a private Club does not enjoy an unlimited potential sales

market, being restricted to serving members and their guests". Recognizing this facility use potential limitation, consider this further quote from the same document: "You informed me that only 10 per cent (approximately) of the members frequently used the Club facilities". This theme was repeated again in a house committee report dated July 29, 1971, "It is apparent that the principal reason for the continuing deficit in the dining room is caused by a lack of patronage by the regular members."

Steps taken in 1978 improved menu quality and diversity. Club management and your officers, aware of past deficiencies that may have deterred member patronage, have worked and are continuing to work to provide still better service and cuisine. In addition, your house committee is currently compiling an action plan to provide for a more pleasant, yet functional, decor.

Let's make this a banner year for the house - start now by bringing family and friends in twice a month. You'll find dining at EYC habit forming and delightful.

Gus Neuss,  
Commodore

## VICE COMMODORE REPORT



The EYC point list is now complete and is posted on the bulletin board.

This year we have received over 400 slip applications. We are in the process of making the final draft; however this will not be complete for another month. Any and all who have not submitted applications should do so immediately if not sooner. So far the basin is in good condition and if the weather continues we should have few problems in this area. In the last edition of the LOG the rules were published regarding registrations of boats for winter, summer, and dry storage. This will be adhered to by all. There is some possibility we might surface O dock at the North Wall but plans have not been finalized.

Clem Schwab  
Vice - Commodore

## REAR

## COMMODORE'S REPORT



(continued)



(continued)

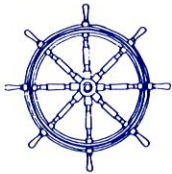
## REAR COMMODORE'S REPORT

The house Committee has been hard at work establishing priorities for this year. At our meeting on Saturday, January 20, 1979 we discussed matters ranging from bar glassware and supplies to matters such as redecorating that properly involves the long range planning committee.

House Committee members who are: Art Althoff, John Ashby, Dee Bressler (representing the Ladies Auxiliary), Paul Brugger, Glenn Malloy, Jim Piersol, George Rose, Kerry Schwab, Pat Sheeran and Jack Tate are anxious for comments from the membership regarding all facets of the club operations and their wishes for future improvements. Please make it a point to contact any of the Committee members or put suggestions in the suggestion box. I assure you that all comments and suggestions will be seriously considered as we need everyone's help.

Some of the projects to be reported on at our next meeting include new bar and dining room glassware, renovation to make better use of our existing space for a wider variety of functions and continued improvement of access to our club such as a portico enclosed entrance for the inclement weather.

Fred H. Reymore  
Rear Commodore



## FLEET CAPTAIN'S REPORT

I would imagine that most of us will have had all of the Winter months necessary to fill our cup by the time this issue has hit our respective stands. We can be thankful that we have suffered so little damage as of this writing.

I am in the process of getting estimates regarding the proper maintenance of our two hoists in the small boat area. Arrangements have been made for Mr. McLane, of McLane Landscaping, to meet with the Ladies Auxiliary to plan any new projects and to continue maintenance of the existing landscaped areas. We are in need of some repairs to our blacktop area i.e. west dock road, central spur roadway etc. which we hope to have resurfaced in time for the boating season.

Please disconnect all electrical hook-ups to your boats unless you are aboard. This includes heaters, lights, battery chargers etc. in accordance with our ground rules. This certainly makes sense since no one would like to be responsible for what might well be one of Erie's most spectacular fires.

Let's hope for an early Spring and a long hot Summer!!!

Roy Martine  
Fleet Captain



Well, Santa Claus didn't leave a 48 - footer for me, but while I was rationalizing why my 34-footer will still be satisfactory, it did occur to me that winter is slowly but surely coming to an end. Before you know it the sun will reach the equator and the days will equal the nights. That time of year is known as the vernal equinox or simply SPRING!

Speaking of time, the calendar hanging on your kitchen wall, though more accurate than any other in history, exceeds the solar year by 26 seconds. Since its inception in 1582, we're now about 2.75 hours ahead of the times! While this fact may provide you with a novel excuse the next time you're late for an appointment, it won't have any earth-shaking significance until the year 4905 comes rolling along. Then the error will amount to one day's time.

Why has mankind been unable to perfect the calendar? Simply because it's so difficult to divide the true solar year (365 days, 5 hours, 48 minutes, and 46 seconds) into workable years--though we've been trying for well over 6000 years.

The next time you look out at that "white stuff" and wonder if spring will ever get here, remember--it will come 2.75 hours sooner than you realize.

Jim Owen  
Editor

## CHET'S RECEIPT

A lot of the fellows would like the receipt for the Tom and Jerrys.

Here it is for a single batch:

*1 dozen eggs, 1 lb. of 4X powdered sugar, cream of tartar, vanilla and salt. Separate the whites of the eggs from the yolks. Add a touch of salt to each. Beat separately, getting them as stiff as you can. Then add them together, adding a teaspoon of vanilla. Beat them again. Then add the sugar slowly and a teaspoon of cream of tartar, and beat them until stiff. Then mix a bottle of Rum and Brandy. Put an oz. and a half of Brandy in a cup, a heaping tablespoon of batter on top, then fill the cup with boiling water and add nutmeg on top.*

Two of these and you can go out ice boating and perspire.

Chet Curriden



ENTERTAINMENT

## YACHT CLUB DOIN'S

By the time this edition of "THE LOG" is printed and mailed, the Hobo Party will have become history. We thank Greg and Berd Weislogel for being chairmen and Butch and Del Kabašinski and Ray and Dot Bujalski for serving on their committee.

Plans are underway for many other events. David and Ellie Sample and Pat and Virginia Sheeran are planning the St. Patrick's Day Party for Saturday, March 17. We are sure this will be another memorable evening. Bob and Charlotte Heinrich are promising us a very elegant evening on April 20 for the Champagne Dinner Dance. Roy Martine and his retinue of revelers will see to it that we get our money's worth at the Annual Auction on May 5. The pomp and circumstance of Opening Day Ceremonies will be on May 28. There will be a picnic in June. On July 21, Doc Bressler and his crew will give us a chance to be detectives in a scavenger hunt.

There will be many other events throughout the year. Watch in future editions of the LOG and your mailbox for announcements and details. Erie Yacht Club Parties are fun places to be. Join us, won't you?

Bob and Guthrie Pratt



## IN MEMORIAM

### EDWARD MAZZA:

Our loyal and effective man on second shift died of a heart attack at the Club on Feb. 5, 1979. Ed, who was only 51 years old had come to the Club in Sept. of 1976 but had worked here before then under a manpower service contract. He was a dedicated employee who carried out his duties most responsibly. He demonstrated a versatility in his work well beyond what was expected and we shall miss him.

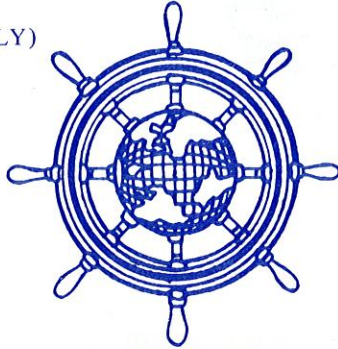
### CHARLES E. KIBLER, M.D.

Of 423 Shawnee Drive died on Jan. 23, 1979. Dr. Kibler had been a member for ten years and with his four children made frequent use of the Club especially water skiing off the Presque Isle beaches.

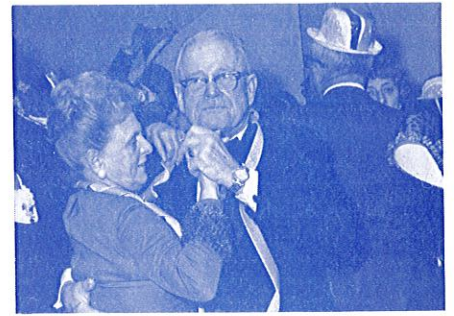


## WELCOME ABOARD

ROBERT ALLSHOUSE  
RICHARD BANNISTER  
NORM BEECHER  
MARCIAN BOUCHARD  
DAVE BROOKS  
DAN BYLER  
WILLIAM CAIRNS  
GARY CERMAK  
ED DAHLKEMPER  
DAVE ECKERT (JR. FAMILY)  
JOHN ELMER JR.  
HARRY ELMGREN  
WILLIAM FOWLER  
JAMES HAMMER  
MARK HENRY  
BRUCE KELSEY  
EDWARD KOCSIS  
WES LYNCH  
HENRY MARSHALL  
GERALD McNELIS JR.  
WILLIAM McCLELLAND



JOHN McGRANE, JR.  
RICHARD MICKLE  
WILLIAM MILLER  
STEVEN MOORE (JR. FAMILY)  
KEN NARDUCCI (JR. FAMILY)  
GARY NIETHAMER  
JOHN QUINN  
CHARLES ROBERTS  
PETER SCHELER  
MOSTAFA SHERAFAT  
RALPH SMOOT  
MARLIND STILES  
THOMAS TALLBACKA  
PAUL TUCKER  
JAMES VAN SCOTER  
BARRETT WALKER  
KARL WOODSIDE  
VINCE WOOSTER  
LEE WRIGHT  
JEFF YAHN



Ah, Merle, we still got it.



Don't say that to me!  
This hat has class



Don't listen to him Agnes,  
He's only a Doctor.



Drink that milk shake Agnes,  
it's better for you.



One more time, with feeling!

## WE NEED YOUR HELP

Helen Good and I are trying to complete the picture gallery of Past Commodores which was started some time ago. The ones we have on hand are now in proper order as to the date these men served. However, there are many missing and we would like the help of any member who might have a picture of one of the Past Commodores - even a snapshot might work, if we could have it enlarged.

Here is the list of those we need and the date they served: WILLIAM L. MORRISON, 1897; ALBERT McDONALD, 1898; WILLIAM S. FOSTER, 1911-1912; CARL E. REICHEL, 1913-1914; OSCAR H. NICK, 1915-1916; HENRI G. CHATAIN, 1917, 1918, 1919; EDWARD H. SCOTT, 1920-1921; GEORGE F. HALL, 1923; HENRY B. VINCENT, 1924-1925; JOHN R. METCALF, 1926; WILLIAM H' SUPPLEE, 1927; GUY C. BOUGHTON, 1930-1931; CHARLES H' EASTMAN, 1934; HORACE PLATT, 1935-1936; DONALD S. STERRETT, 1937; ORSON J. GRAHAM, 1938; EBEN J. GUNNISON, 1940-1941; R. B. SCHLAUDECKER, 1945; CLARENCE M. KRUG, 1946; ROBERT W. PARKER, 1947; NORMAN J. GRODE, 1950; ROBERT Y. BURNS, 1951; U.A. DIETLEY, 1952; FORMAN H' CRATON, 1954; JOHN D. CLEMENS, 1957; WILLIAM E. WALKER, 1958; FRANK W. ZURN, 1961; GORDON S. ALTMAN, 1963; ARTHUR S' BOLDT, 1966; and RICHARD J. GORNY, 1976.

It would be wonderful to have this brought up to date. Please contact Helen Good at 534 Vermont Ave., Erie, 16505 - phone number, 454-2203; or me, Marjorie Neuss, 810 Pasadena Drive, Erie, 16505 - phone number 833-7500. We'll be grateful for any help.



Bernie Charisse and Red Astaire!



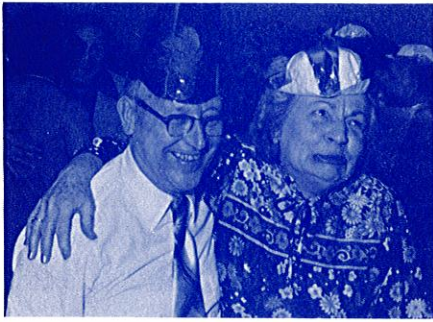


1979

# STATION 31 TENTATIVE MORC RACE SCHEDULE

SAT	MAY	19	EYC	8:00	am	WEIGHT & MEASUREMENT
WED	MAY	23	BAY	7:00	pm	WED EVENING SERIES NO. 1
SUN	MAY	27	BAY	9:00	am	MEMORIAL DAY LIGHT HOUSE RACE
WED	MAY	30	BAY	7:00	pm	WED EVENING SERIES NO. 2
WED	JUNE	6	BAY	7:00	pm	WED EVENING SERIES NO. 3
SUN	JUNE	10	LAKE	10:00	am	SUMMER LAKE RACE
WED	JUNE	13	BAY	7:00	pm	WED EVENING SERIES NO. 4
SUN	JUNE	17	LAKE	10:00	am	FATHERS DAY RACE – TIMED START
WED	JUNE	20	BAY	7:00	pm	WED EVENING SERIES NO. 5
FRI	JUNE	22	BAY	5:30	am	ERIE TO DOVER
SAT	JUNE	23	LAKE	T.B.A.		DOVER
SUN	JUNE	24	LAKE	8:00	am	DOVER TO ERIE
SAT	JULY	7	LAKE	10:00	am	FIRECRACKER REGATTA
SUN	JULY	8	BAY	9:00	am	FIRECRACKER REGATTA
SUN	JULY	8	BAY	1:00	pm	FIRECRACKER REGATTA
SAT	JULY	14	LAKE	10:00	am	CHET CURRIDEN TROPHY
SAT	JULY	28	BAY	9:00	pm	NIGHT LIGHTHOUSE RACE
SAT	AUG	4	BAY	2:00	pm	ERIE DOVER DAY (2 LAPS)
SUN	AUG	5	BAY	10:00	am	ERIE DOVER DAY (2 LAPS)
FRI	AUG	10	BAY	6:30	am	ERIE TO ASHTABULA
SAT	AUG	11	LAKE	9:00	am	ASHTABULA TO MENTOR
SUN	AUG	12	LAKE	9:00	am	MENTOR TO ROCKY RIVER
SAT	AUG	18	LAKE	9:00	am	FALCON CUP
WED	AUG	29	BAY	7:00	pm	FALL EVENING SERIES NO.1
WED	SEPT.	5	BAY	7:00	pm	FALL EVENING SERIES NO.2
SAT	SEPT	8	BAY	8:00	am	BARCELONA RACE
SUN	SEPT	9	LAKE	8:00	am	TRADITION CUP (BARCELONA TO ERIE)
WED	SEPT	12	BAY	7:00	pm	FALL EVENING SERIES NO.3
SUN	SEPT	16	BAY	2:00	pm	TWICE AROUND TIMED START
SAT	NOV	3	EYC			MORC BANQUET





If you step on my corns one more time I'll kill ya!



Straighten up, this picture might be for the Log.



Is midnight gone already?



I can't control him. After one beer he always gets like this.

LAUGH

WITH THE

Log

## WOMEN'S AUXILIARY

On March 7th, our luncheon speaker will be Bob Heinrich, an EYC member, and owner of the Heinrich-Feigel Furniture Store on 8th Street. Bob will give us a talk on Interior Decorating, which promises to be very interesting.

Our Fleet Captain's wife, Rosemary Martin, is making plans for decorations for our annual Spring Tea and Fashion Show. She and her committee would like any oleo tubs you might have, and would appreciate your bringing them to our March luncheon.

For the benefit of new members - a welcome all wives of EYC members and their guests at our Luncheon meetings. Lunch is served at 1 p.m. followed by a program, and the cost is usually \$3.00 per person. These luncheons give wives a chance to get acquainted, especially during the part of the year when there is no boating. It is necessary to let me know if you want to be on the calling list, as reservations must be made in advance with the dining room manager, Bob Rulli.

Our money making projects include the sale of items from the Gift case and the Spring Tea and Fashion Show in May. Money from these has resulted in donations to the Yacht Club, which includes such items as folding chairs, redecorating the Ladie's room, silver trays and tea services and candelabra, etc.

For anyone who might be interested, we do have a Garden Club which meets on the third Wednesday of the month, at 10 a.m. usually at the Yacht Club. We have had a variety of projects: planting flowers at the Club in the spring, flower arranging, macrame, etc. and have made trips by car to places of interest. Again, if you'd like to join us - there are no dues - but it would be necessary for you to be on a calling list.

There is also a bridge club which meets on Tuesday from 10 a.m. until 2 p.m. in the Board room, which is open to members and invited guests. Mrs. Gert Mason gives instruction from 9:30 to 10 a.m., and the group has lunch at the Yacht Club.

Marge Neuss

## PUBLIC NOTICE Maintenance Dredging of Erie Harbor

We received the following notification from the Army Corps of Engineers. This is a summary; however the full details are posted on the club bulletin board.

*The Buffalo District Corps of Engineers proposes to dredge the Federal navigation channels at Erie Harbor in order to maintain sufficient depth for deep draft commercial vessels using the harbor.*

*The dredging is scheduled to be performed during April and May 1979.*

*Sediments will be hydraulically removed from the harbor bottom by a hopper dredge and placed in hoppers aboard ship for transport to the disposal area.*

*The material to be dredged consists of silts and sands. The United States Environmental Protection Agency (USEPA) has determined that the material, to be dredged during this assignment is suitable for open lake disposal.*

*The open lake disposal site is a one mile square located three miles north from lighted buoy No. 2. This area has not been designated for use by the Administrator, EPA, but is the area established and used by the Corps of Engineers for disposal of Erie Harbor dredgings since the mid 1930's.*

*An estimated 180,000 cubic yards of materials will be removed this year.*



Hey Fred! How much booze are you putting in those things? This crowd is getting squirrely.



## DINING ROOM AND BAR

**Monday:** Bar: closed all day  
Dining Room: closed all day

**Tuesday:** Bar: open 11:30 a.m.  
Dining Room: lunch served  
11:30 - 2:00 p.m. closed  
for dinner

**Wednesday:** Bar: open 11:30 a.m.  
Dining Room: lunch served  
11:30 - 2:00 p.m. Family  
Night Dinner 6 - 9 p.m.

**Thursday:** Bar: open 11:30 a.m.  
Dining Room: lunch served  
11:30 - 2:00 p.m. Closed  
for Dinner

**Friday:** Bar: open 11:30 a.m.  
Dining Room: lunch served  
11:30 - 2:00 p.m. Dinner  
served 6 - 9 p.m.

**Saturday:** Bar: open 11:30 a.m.  
Dining Room: lunch served  
11:30 - 2:00 p.m. Dinner  
served 6 - 9 p.m.

**Sunday:** Bar: open 11:30 a.m.  
Dining Room: Sunday  
brunch 11:30 - 2:00 p.m.  
Closed for dinner

\*Dining Room Will Open For Groups  
Upon Request On Nights Listed Closed

\*These Hours Are In Effect Until April 1

## 1979 ERIE YACHT CLUB DIRECTORY OFFICERS & DIRECTORS

COMMODORE - Gustave Neuss (Supervision all areas) . . . . .	833-7500
VICE COMMODORE - Clemens Schwab (Dock assignment, Maint.) . . . . .	833-1116
REAR COMMODORE - Fred H. Reymore (House, Bar, Galley) . . . . .	866-0337
FLEET CAPTAIN - Roy Martine (Roads, Grounds, Security) . . . . .	456-1868
SEC'Y - TREAS. - G. William Ambro (Records, Finance) . . . . .	455-8501
DIRECTORS	
Harold Bush	Jack Finn
Richard Waller	John Damcott
Howard Miskill	Wm. Behr, Sr.
	John V. Schultz

## COMMITTEE CHAIRMEN

MEMBERSHIP - Wm. Behr, Sr. . . . .	866-9747
ENTERTAINMENT - Robert B. Pratt . . . . .	838-4936
HISTORIAN - George Sipple . . . . .	455-1674 & 833-4022
AUXILIARY FLEET CAPTAIN - John Finn . . . . .	
LONG RANGE PLANNING - John Damcott . . . . .	868-4885
CLASS BOAT FLEET CAPTAIN - Mark Rickloff . . . . .	456-0493
REPRESENTATIVE TO I.L.Y.A. - P/C Ben Ginader . . . . .	838-2340
SWIMMING POOL COMMITTEE - Frank Knauer . . . . .	899-3822

## EDITORIAL POLICY

The *Log* is the official publication of the Erie Yacht Club, and is for private distribution. Publication is scheduled for the fifteenth of February, April, June, August, October, and December. Articles of interest and notices of events are welcome; however, material should be submitted in writing to avoid error. Publication is at the option of the editor and the right to rewrite for brevity and clarity is reserved. Copy should be mailed on or before the twenty-first of the month preceeding publication date. Address to Editor James L. Owen, Sr., 2618 East 33rd Street, Erie, PA, 16510.

## ERIE YACHT CLUB

P. O. BOX 648  
ERIE, PA. 16512

### BULK RATE

U. S. POSTAGE

**PAID**

ERIE, PA.

PERMIT NO. 344

EDWARD C. IRVIN  
261 EAST 34th ST.  
ERIE, PA. 16503

