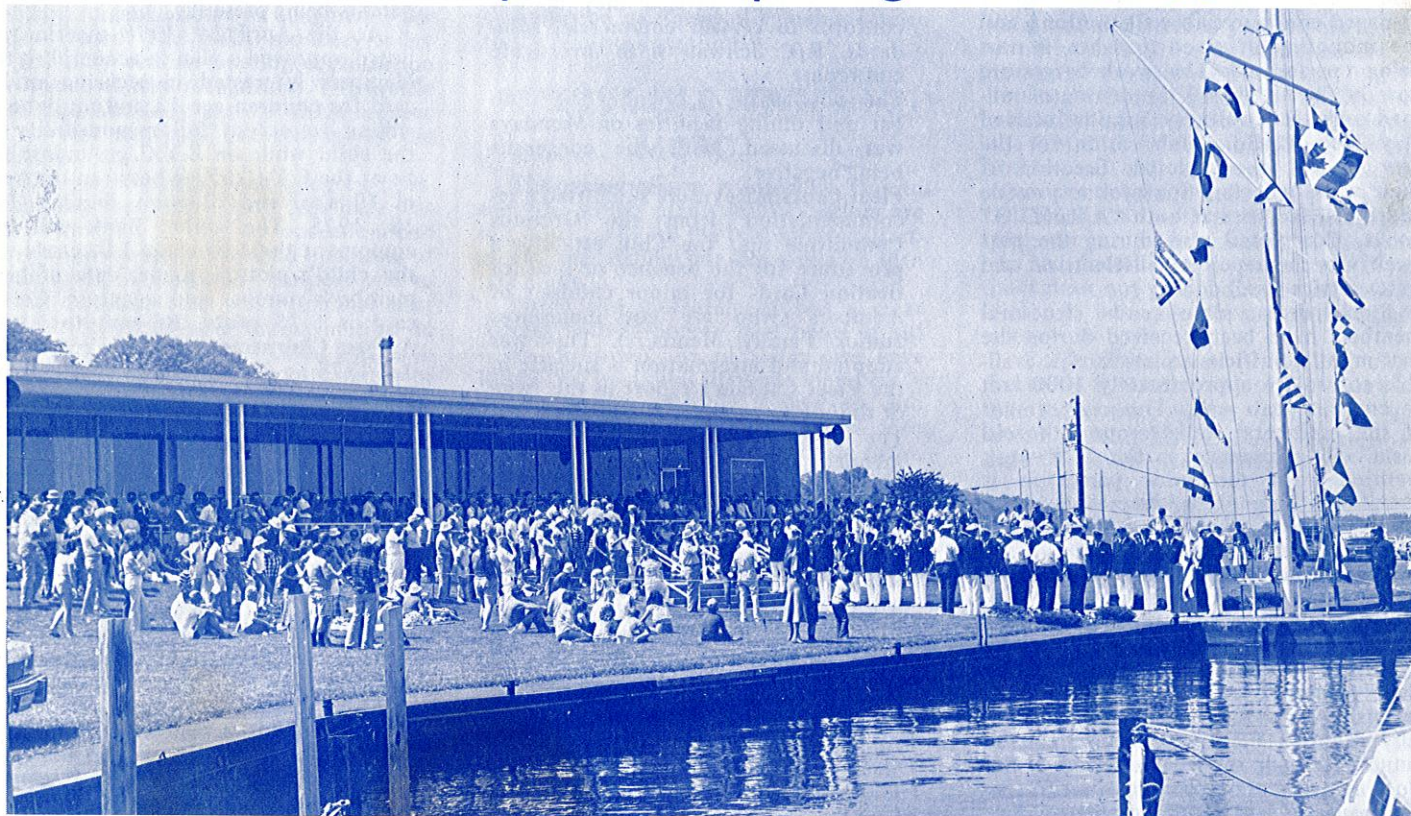


## Memorial Day – EYC Opening Ceremonies



Sunny skies prevailed for the 27th consecutive year at E.Y.C.'s 84th Traditional Memorial Day Festivities.

### COMMODORE'S COMMENTS



As I write this, it actually appears as though spring is finally upon us. Boats are beginning to show up in their stalls, and the Waller family even went for a sail the other day. Dave Schuler joined us and we had a fine time -- hardly sank much at all.

On Saturday, May sixth, Betty and I, along with Ed Irvin, drove over to Port

Dover to join in their Opening Day festivities. Unlike EYC, Port Dover has an evening affair with dinner and dancing, and it was a resounding success. Next morning, before heading back to Erie, we were guests at the cottage of Dalton and Wanda French for breakfast. Looking across at the Port Dover Yacht Club from their cottage at 9:30 a.m. it was easy to determine the previous night's party had been a good one - the entire basin was incredibly quiet. They are fine people and we had a great time!!

At the present time the Club is busily preparing for our eighty-fourth Opening Day on May 29th., however by the time this is published it will be over. Therefore, I will not go into detail except that I trust it turns out as well as the previous eighty-three.

The mortgage burning party is scheduled for July 22nd. Mark your calendar as this is one you don't want to miss!!

Now that the boating season is coming

into full swing, I would like to suggest two words which we all might try to keep somewhere in the front of our minds. They are "Courtesy" and "Safety".

"Courtesy" means observance of the Rules of the Road and consideration for the rights (and limitations) of others, including the often overlooked fact that every skipper is responsible for his boat's wake and any damage it may cause.

"Safety" means the realization that you are ultimately responsible for the welfare of everyone on your boat. Have a Courtesy Examination by the U.S. Coast Guard Auxiliary - it is well worth a few minutes of your time. There is no charge for this service. If your boat does not qualify for a decal, they are happy to re-examine the boat after the corrections have been made. Who knows, they just might find potential trouble that will save you a lot of grief later ... and we do want to see all of you back again in 1979!!

Richard E. Waller, Commodore





## VICE COMMODORE REPORT

All major dock repair and installation has been completed as of this writing. Minor work consisting of straightening of a few twisted platforms, replacement of damaged concrete slab walk sections, and the mounting of wood uprights, is now being performed. The work barges are now in the water and the driving of railroad rails for walkway support started May 16th. Platform fabrication for the new "slips" is completed. Erection of these walks will start this week to provide additional facilities at both "A" and "O" docks. Completed also during the past week was the repair of all electrical and water service to all docks.

Steel deck plate and structural members have been received during the past month. Sufficient plate is now available to replace approximately 1000 feet of concrete slab walk. This replacement of the peripheral walks around the old basin will commence as the dock work mentioned in the prior paragraph is completed. To minimize inconvenience to slip occupants this project will be accomplished in short sections.

The five keg moorings used in previous years have been reactivated and assigned. A grapnel search of the bottom for any of the additional moorings (approx. 30) was performed and two possibles marked for diver verification. A scuba volunteer is promising to investigate this week. Hopefully more of these keg anchors can be found and made serviceable to satisfy the mooring needs of our less senior members.

Because of less than favorable weather conditions, yacht launchings are at least two weeks behind normal schedule. Dock facilities have been available and dates open for drop-ins but delay in completion of the necessary spring refurbishing work by individual yacht owners has had an impact on clearing the storage areas. Dry sailors are pushing for space occupied by the big boats. Tolerance is encouraged.

Cradle stacking along the south fence will be performed by our personnel this year, utilizing the hi-lift unit procured since this operation was done by a contractor in 1977. Care will be observed to insure that this stacking is accomplished in a manner to eliminate damage to cradles as experienced previously. Discussion with concerned personnel has already been held relative to proper handling of cradles in their transfer from the launching site to the intermediate storage areas.

Dock beautification is admired and encouraged. Painting of the steel decks is one means of improving your immediate dock vicinity. Paint is furnished by EYC. You furnish the rollers and labor.

Good Boating in 1978.

## SECRETARY'S REPORT

Excerpts form the April 17 Board Meeting:

- \* Vice Commodore Neuss reported good progress in dock repairs, including the construction of five new catwalks scheduled for eventual installation on "A" and "O" docks. As of the meeting date there are thirty-two applicants awaiting stalls.
- \* Rear Commodore Schwab reported on the status of the Clubhouse operation. It apparently will be necessary to replace the freezers presently in the galley. These, although apparently adequate, are residential types and the Club has been advised they do not conform to certain commercial standards. R/C Schwab is to investigate and report.
- \* The possibility of opening the Club bar and dining facilities on Mondays was discussed, with the consensus being negative.
- \* Fleet Captain Reymore submitted a recommendation from the Grounds Committee that the Club establish a procedure for the issuance of Identification Cards for minor children of members (who are not themselves Junior Family Members). This was adopted and information is specific in the Fleet Captain's report in this issue of the Log.
- \* The Grounds Committee also recommended institution of a low cost charge for use of the Club's launching ramp by non-members. This was rejected - the Board citing the probability of increased insurance costs plus the undermining of our status as a private club.
- \* A number of membership actions were taken, including the following admissions:  

Donald Shepard	Senior Member
Dorothy Emling	Special Member
Douglas Mszanowski	Junior Member
Mark DeDionisio	Regular Member
James Miller	Regular Member
David Ashby	Regular Member
A. Tim Brugger	Regular Member
John Kabasinski, Jr.	Regular Member
John Lehrian	Regular Member
Daniel Miller	Regular Member
William Smyth	Regular Member
James Thomas	Regular Member
Christian Zurn, Jr.	Regular Member
James Vincent	Regular Member
Ronald Candela	Regular Member
John Catrbone	Regular Member
Joseph Daniele	Regular Member
Larry Hall	Regular Member
David Jones	Regular Member
Wm. Phillips II	Regular Member
John Stroh	Regular Member
Seth Marshall	Regular Member
- \* Also approved were requests for a number of parties.

Your Swimming Pool Committee has been meeting and is now in the process of preparing a proposal for submission to the Commodore for his consideration and possible future action.



## FLEET CAPTAIN'S REPORT

At the General Membership meeting held November 1977, the membership passed a resolution instructing the board to work out means of allowing teenage and older children of members, access to the Yacht Club grounds without the parents being present.

At the April 24, 1978 meeting, the board approved a plan to accomplish this. Members interested in securing an I.D. card for children age 13 and up, who are willing to accept full responsibility for the child while on E.Y.C. grounds should be at the E.Y.C. office between the hours of 10 a.m. and 12 noon, Sunday, June 18, 1978. The Union Bank will have equipment there to make I.D. cards with the child's picture, name, date of birth, member's number and signature. Cost of card is \$.75 cents. Be sure to let Bill Ambro, Club secretary, know before June 16, 1978 so he can secure enough blank I.D. cards.

The children with I.D. cards then will be admitted to the E.Y.C. grounds from 8 a.m. to 4 p.m., Monday through Friday by pressing the button on the gate entrance post and identifying themselves by their own name and their father's number.

If for some reason, you cannot make the June 18, 1978 date, contact Bill Ambro. He will arrange some means of securing an I.D. card through the Union Bank.

The watchmen have been instructed to watch for children wanting admission between the hours of 4 p.m. to 9 p.m., and admit them if they have their I.D. card.

Also, gate cards can be secured for visiting boats. The skipper of the visiting vessel should contact the office from 8 a.m. to 4 p.m. and deposit \$20.00. He will be given a card and a receipt for his deposit. Before departure, he should return them to the office. However, if he decides to leave after 4:00 p.m., he must return both to the bartender or Club manager, and get his deposit. The card must be returned to E.Y.C. The visitor will be contacted through his own Club and charged for any unnecessary cost to the E.Y.C., for failing to return the gate card to the E.Y.C.

In addition to the above new notices, please be aware that dog walk signs are in place now. If you see a visiting boat or stranger to the Club with dogs, please give them directions. We would like to keep our lawns clean and neat. We do have a very good lawn service now, so let's all see to it: the lawn if for children and people -- not dogs!

Speed limit on E.Y.C. grounds is 15 miles per hour. It is posted; please observe, and have an enjoyable and safe boating season.

Fred H. Reymore





Perhaps you've seen some craft flying Coast Guard Auxiliary Flags and wondered what kind of an organization they represented. Congress created the Coast Guard Auxiliary in 1941 as a volunteer civilian organization to augment the Coast Guard. The USCG auxiliary today is the only civilian boating organization with such official recognition. This article discusses Auxiliary patrols which are one of several activities engaged in by the Auxiliary.

The primary purpose of Congress in establishing the Coast Guard Auxiliary was to promulgate safety in operation and navigation by all owners and operators of small craft. A secondary purpose was to utilize auxiliary craft and personnel after suitable training and indoctrination in carrying out duties of the Coast Guard, in particular those concerned with safety of navigation. It is a non-military organization which is composed of people interested in the safe operation of motor boats and yachts. It operates entirely within the Coast Guard's civil functions.

The principal purpose of the Coast Guard Auxiliary patrols is to leave the regular Coast Guard as free as possible for critical search and rescue missions.

All boats operating under orders must first have been inspected and qualified as "operational". Crew members must also be "basically qualified" Auxiliary members. This requires passing an examination covering such subjects as seamanship, piloting, search and rescue, communications and weather.

Several types of patrols are conducted by the Auxiliary. They generally are authorized by the Coast Guard. They are as follows:

- 1) Safety Patrols which consist of one or more operational facilities patrolling an assigned area and rendering assistance to civilian vessels where possible. Boats in this type patrol are generally underway and generally remain in rapid contact with the Coast Guard Station.
- 2) Search and rescue (SAR) patrols, which may be conducted by auxiliary at the Coast Guard's discretion. All such patrols are directed by the officer in charge at the station.
- 3) Regatta patrols which are conducted primarily for traffic control of spectator craft.
- 4) Chart updating patrols which are carried out to verify the accuracy of chart information.

By request of the State Boating Law administrator or his designate, patrols may be conducted on state waters where the Coast Guard has no expressed interests.



Last year, Division 5 of the Ninth Coast Guard District (of which Erie is part), carried out 162 patrols which resulted in 58 assists to about 200 people with 4 lives saved. Truly this volunteer organization performs a valuable service to the boating community.

## PRESQUE ISLE STATION 31 MORC

The racing season is upon us. Due to the late spring many MORC sailors are not quite ready, so the last minute adjustments and fitting out has gone on into late hours.

Weigh and measurement was a great success with seventeen new boats or old being measured. As of today, we have thirty-two boats and fifty-one members.

Our season schedule is now set and firm with thirty-two races broken into short, medium and long - distance races. The highlight of the season will be our Dover series leaving Erie on Friday, June 23rd at 6:00 a.m. There is plenty of time for anyone interested to join MORC and get involved in racing at its best.

This year we have a new series going to Rocky River for the Falcon Cup. Also the same day and race will be the Tradition Cup donated by our own Dave Burdick.

In closing, I would like to remind you of our second weigh and measurement on Saturday, June 17th at EYC. We have room for more members and our fees are very reasonable. See you on the race course!

This year we will experience some of the new hot boats like J-24, Ranger 22 and Mega 30. With our latest handicapping rule, time allowances have been brought together. This will be a close season.

Many skippers still need crew. If you are interested in crewing or sailing, see a MORC member.

Happy Sailing,  
Dick Robertson, Jr.  
Commodore Station 31

## ERIE POWER SQUADRON

- June 15 - Regular Dinner Meeting  
Erie Yacht Club
- June 26 - Executive Committee Mtg.  
Erie Yacht Club
- July 4 - Annual Fleet Review and  
Boat Parade - originating at  
Erie Yacht Club
- July 31 - Executive Committee Mtg.  
Erie, Yacht Club



## COURTESY MARINE EXAMINATION

**FOR WHOM?** - All boats - big or small - motorboat or sail. Make the seal of safety a part of your boat by getting a Coast Guard Auxiliary Courtesy Motorboat Exam. It is a free check of your boat's safety related equipment covering all federal and state requirements plus additional standards recommended by the Auxiliary. The exam is conducted only with your consent by a qualified member of the Auxiliary.

If your boat passes the exam, the award of the decal is your assurance that your boat is properly equipped for fun and safety on the water.

Coast Guard boarding officers will normally consider a boat which displays the C.M.E. decal to be in compliance with the law and will not board it unless they observe an obvious violation.

C.M.E. is not a law enforcement program. At the conclusion of the exam, the check-off list is given to you. If your boat does not pass, no report of deficiencies will be made to any enforcement agency.

For information as to requirements or for a C.M.E. contact any of the following: Bill Behr, Dick Sarver, John Hall, Nick Virgilio, John Myers, David Preston, Pat Riley, Betty Waller, or Marj Behr.

## PROTECT YOUR PROPERTY!

We are pleased to announce that EYC has been given an opportunity to help our members protect their property from theft. As part of their continuing program against crime, the local office of the Governor's Justice Commission has volunteered to set up facilities at the Club on Sunday afternoon, July 9th, and engrave identification data on members' personal property.

Although they will apply whatever identification you wish, it is suggested that your driver's license number is quite helpful to the police in verifying the ownership of stolen property.

Since there is no charge for this service it is requested that you limit your articles to items from your boat. Bring your portable radios, T.V. sets, binoculars etc. to the Clubhouse. We intend to set up operations on the front porch. For those items attached to your boat and not readily removable, bring your vessel over and tie up in front of the Clubhouse long enough for someone to come aboard and engrave your gear in place.

Those who avail themselves of this service will receive a decal suitable for display on their boat. This decal, in itself, is a deterrent to the professional thief, as it notifies him that the property on board is dangerous to have and not easily disposable. So - remember the date - Sunday afternoon, July 9th, starting at 1:00 p.m.

A big "THANK YOU" to the Governor's Justice Commission for providing this service!!

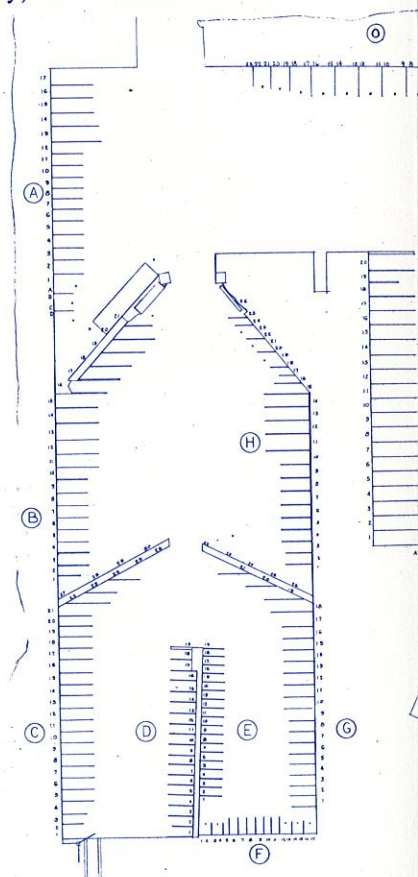
Richard E. Waller, Commodore



1. Abbot, F.W.	Bacchus	E-4	71. Curtze, C.A.	Thule	A-16
2. Akre, E.C.	(GJØA)	C-19	72. Curtze, F.F.		F-10
3. Allen, A.N.	Low Bid	J-20	73. Dauer, J.H.	Wind-song	K-4
4. Ambro, E.	Foxylady	J-24	74. Davey, D.A.		A-C
5. Ambro, G.W.	Vixen	B-19	75. DeArment, W.A.	Key of F	I-1
6. Amthor, J.W.	Amkids	K-1	76. DeFazio, F.		E-6
7. Amthor, R.H.	Curiosity	D-4	77. Deike, G.H., Jr.	Ursa	I-20
8. Anderson, W.L.		B-1	78. DeMarco, J.J.	Daropa	E-18
9. Anderson, R.B.	Invader	H-25	79. Dietsch, T.N.	Tadpole	L-24
10. Arnold, C.F.	Shawnee	K-12	80. Dohmeier, H.E.	Musty	O-16
11. Ashby, E.A.		J-23	81. Dockstader, E.S.	E-Z	F-2
12. Ashby, J.L.	Jed III	H-14	82. Doll, E.C.	Winner	F-13
13. Baker, A.	Lily Bee	N-7	83. Doyle, P.W.	Free Spirit	B-3
14. Barish, S.S.	Mira	K-8	84. Drumheller, J.F.	Mijud II	C-15
15. Bauman, A.J. Jr.	Linsu	D-13	85. Dunn, I.J.	Res Ipsa	O-1
16. Baumbach, C.H.	Putzer	B-2	86. DuVze, R.L.	Por Fin	C-7
17. Bean, H.	Acquacile	L-12	87. Dyer, J.H.	Kokanee	L-13
18. Beatty, J.W.	Luna Sea	H-11	88. Eichenberger, W.	Stickleback	A-5
19. Beck, D.	Spindrift	J-26	89. Eisenberg, R.B.	Ballerina	B-21
20. Becker, R.J.	Florence Marge	K-7	90. English, L.	Skippy	C-22
			91. Erich, J.L.	Pinky	G-2
21. Beers, R.H.	La Vienta	J-6	92. Fellows, R.	permanent Wave	I-3
22. Behr, W.J.	Deadline	I-2			B-7
23. Benson, E.M.	Doran	K-10	93. Fields, J.J. Jr.	Seascape	C-6
24. Benson, P.A. & Enterline, R.H.	Entson	C-21	94. Filip, J.E., Jr.	Linde Star	G-3
			95. Filip, R.	Cricket	L-38
25. Bentz, W.	Maria	G-5	96. Finley, T.E.	Loner	L-23
26. Bert, J.B., Jr.	Diablo	B-15	97. Finn, J.J.	Killary	J-10
27. Bessor, W.D.	Shady Lady V	L-30	98. Fischer, H.R.		Sometimes Kate
28. Bierig, D.A.	Anemone	C-17	99. Flaherty, W.A.		L-105
29. Biggs, R. W., Jr.	Vernie	O-15			D-5
30. Billingsley, R.J.	Bobby Shafto	L-112	100. Flanagan, J.J.	Friendship	D-12
31. Blakely, C.	Curlew	H-15	101. Fourspring, N. & Clark, H.		
32. Block, R.	Ribob	Keg			
33. Bloomstine, W.	Spirit	A-6	102. Frost, R.W.	Stormalong	H-20
34. Blotter, A.R.	Cerulean	A-12	103. Fry, W.R.	Sue Boat	D-8
35. Boldt, G.A.	Rapture	E-8	104. Frye, R.D.	Whisper	L-106
36. Boles, D.	Soleil	A-13	105. Fuhrman, A.	Weethree IV	H-5
37. Bressler, C.B.	Rhapsody	M-1	106. Fuhrman, G.A.	Starfire	C-20
38. Brew, E.J., Jr.	Bruiser III	C-24	107. Funsch, W.E.	Windancer	M-3
39. Brinckleo, W.D.	Romany	O-13	108. Ganas, C.E.	Electra "G"	L-34
40. Brotherson, D.A.	Tanqueray	G-26	109. Garren, G.	Rook	E-19
41. Brown, C.H.	Gill-D	L-16	110. Geary, P.	Vision	H-18
42. Brugger, P.D.		L-114	111. Gebhart, M.W.		H-17
43. Bryan, R.G.	Moby Dick	L-36	112. Gempel, E.		L-14
44. Bulmer, J.R.	Genie	N-2	113. Glass, J.	Mi-Jo-Bi	O-22
45. Burdick, D.J.	Tradition	L-108	114. Goodill, J.	Stella Maris	A-10
46. Burkley, G.	Tosca	G-8	115. Goodrich, M.	Vanity Fair	O-9
47. Bush, H.M.	Dottie Lou	D-11	116. Gorny, Greg		K-1
48. Busse, F., Jr.	Desire	E-10	117. Gorny, R.	Banshee	B-13
49. Busse, R.	Someday	J-16	118. Gregory, E.J.	Water Witch	H-22
50. Calvano, D.		D-10	119. Griffin, M.	Gryphon	N-9
51. Carroll, T.H.	Iota	E-11	120. Guthleben, J.	Gail Ann	Keg
52. Cerami, G.F.	Late Start	L-113	121. Gwynn, R.M.		C-28
53. Cerami, R.M.	Oops	L-27	122. Hagle, R.F.	Clyde	F-11
54. Chambers, R.C.	R.C.	H-23	123. Hahn, C.K.	Ilikai II	C-11
55. Chernoff, W.	Paper Doll	H-16	124. Hallgreen, J.T.	Lutfisk	D-2
56. Chesko, C.	Snoopy	L-118	125. Hamilton, R.D.	Avalanche	L-37
57. Chesner, H.		M-10	126. Hamilton, S.G.	Seeker	L-121
58. Church, A.	Co Co Jo	C-26	127. Hanlin, G.		L-31
59. Church, C.W.	CB	K-14	128. Hardner, N.H.	Aquarisu	D-15
60. Clauch, C.K.		F-4	129. Hargarther, J.	Gypsy III	M-6
61. Coleclessner, R.E.	Compromise	B-6	130. Heard, R.	Jr.	G-9
62. Collman, T.W.	IOSP2	C-3	131. Heidt, H.		C-29
63. Conard, G.	El-Con IV	K-13	132. Heinlein, J.T.	Aeolus	B-18
64. Conaway, E.	Big Toot	I-16	133. Heinrich, R.		F-3
65. Conboy, F.T.	Yobnoc	M-7	134. Held, J.J.	Outrage	L-103
66. Corson, W.H.	Su-bil-lu	L-18	135. Helfrand, R.	Saber	B-14
67. Casper, H.W.	Hank & Lou	L-28	136. Henshaw, R.C.	Tarseah	I-14
68. Crowell, M.L.	Devshire	B-17	137. Herr, J.N.		E-12
69. Cruciana, F.L.	Circe	C-12	138. Hilliard, J.		E-5
70. Csencsics, S.	Sea Spray	F-6	139. Himebaugh, L.	Argonaut	I-5

# EYC SLIP AND KEG

140. Hoffman, G.	Jabberwock	N-5
141. Holden, R.	Kalola	O-7
142. House, R.	Southern Comfort	H-13
		K-11
143. Irvin, E.C.	Ed's Cash	E-3
144. Irvin, T.E.	Lady Jane	H-2
145. Isler, N.	Peejay	I-13
146. Jageman, J.	Finesse	B-12
147. James, D.		L-39
148. Jarecki, F.	Trotzdem	L-110
149. Jewell, K.	Vega	N-8
150. Johnson, B.L.	Double Eagle	C-4
151. Johnson, W.E., Jr.	D.J.'s Locker	H-9
152. Jones, D.L.	Chal's Gals	I-11
153. Jordan, C.	Keeper III	B-5
154. Keep, D.	Caprice	B-16
155. Kemble, E.F.	Good Grief	J-17
156. Kenndey, T.W.		

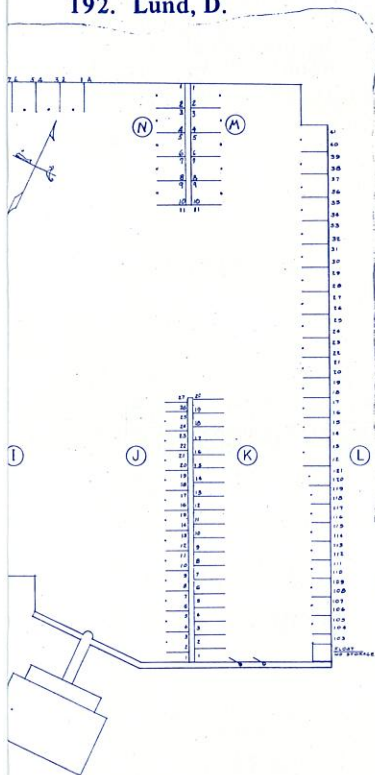


157. Kerr, S.	Tooth Ferry	K-9
158. Kibler, C.	Silvertine	G-21
159. Kiester, G.	RES	G-24
160. Killila, D.	Gales Den	D-7
161. Klaber, R.D.	Praeceptor	M-4
162. Klahr, C.D.	Breezin' Up	L-17
163. Kleinhanz, F.	Alleginace	A-7
164. Klett, E.L.	Ardent	I-19
165. Knauer, F.	Two Step	G-17
166. Knobloch, T.A.	8-No More	K-5
167. Knox, R.E.	Boy	F-7
168. Koedel, J.G., Sr.	Kittiwake	E-14
169. Koedel, J.G.	Elusive	K-15
170. Kolbe, R.E.		F-5
171. Kolivoski, P.	Gold Dust	A-D
172. Kramer, C.G.	Seafarer	C-14
173. Kramer, W.M.	Ruth and Me	L-117
174. Kremer, E.S.	Dolphin	L-107



# DIRECTORY 1978

175. Krohmer, J.S.	South Shore	I-4
176. Kubeja, R.	R-Krew	G-19
177. Lamp, A.	Pequod	Keg
178. Lasher, D.	Razzmatazz	B-10
179. Lasher, R.L.	Caliente	B-11
180. Law, A.E.	Tsalsa	L-29
181. Leach, G.		N-11
182. Lechtner, R.M.	Someday III	O-A
183. Leto, J.		E-2
184. Lindsay, M.G.	Beth Ann	F-1
185. Lindsley, P.	Sea Mist	E-16
186. Lockwood, T.		D-16
187. Loesel, R.O.	Airborne	B-4
188. Loew, W.		L-15
189. Longo, L.P.	Lo-An	L-33
190. Lorence, H.T.		L-13
191. Lukas, A.J.	Mary Liz	I-6
192. Lund, D.		A-B



209. Martine, R.	Zephyr	J-14
210. Matts, C.	S.S. Meca	D-17
211. Mehl, E.J., Jr.	Chaos	O-12
212. Mehl, E.J., Sr.	Tiny Doll	D-3
213. Metzgar, C.E.	La-Z-Boy	I-15
214. Midkiff, M.	Compass Rose	O-21
215. Mikolajczak, M.	Michael-Dee	K-3
216. Miller, F.M.	Keyco	I-7
217. Miller, J.L.	Winsome	J-12
218. Miller, S.H.	Josa	L-41
219. Milloy, G.		O-20
220. Milloy, R.H.		F-15
221. Miskell, H.	White Lightnin'	K-2
222. Mitchell, J.H.	How Else	K-18
223. Momeyer, P.	Mon Petite	F-12
224. Morey, R., & Turley, B.	Barymor	M-5
225. Mork, G.	Amy	B-8
226. Morrison, R.S.	Kathmandu	L-22
227. Murphy, Mark	Fox-Fire	O-5
228. Myers, K.N.	Genesis	K-17
229. Nacken, K.G.		L-115
230. Nagle, B.	Glasspar	E-9
231. Nagle, D.B., Jr.	Westerly	B-20
232. Neuss, G., Jr.	Indian Summer	M-2
233. Newberry, D. & J.	Onion	L-120
234. Nichols, R.E.		O-10
235. Nyberg, T.N.	Swede II	G-20
236. O'Melian, W.		G-25
237. Owen, J.L., Sr.	Pretty Penny	O-17
238. Painter, D.	Signa	F-9
239. Painter, R.	Delight	I-18
240. Patton, J.	Follow Me	J-15
241. Penna, A.J.	Peg-o-My Heart	O-3
242. Peterson, T.L.		F-8
243. Pettinato, F.	Otanittep	L-25
244. Piersol, J.J.	Blue Fin	J-5
245. Plumpton, W.A.	UAUTO Go II	H-12
246. Policano, A.	Dreadnought	J-19
247. Pollock, L.	JoHo	A-3
248. Porreco, L.		J-21
249. Potter, S.	Jalex	L-109
250. Pratt, R.	Scamp	J-4
251. Preston, D.	Marnie	G-13
252. Raimy, B.		A-A
253. Raimy, D.	Jack Tar	I-17
254. Raimy, G.		A-1
255. Rank, R.C.	Winona	D-1
256. Reed, G.	Windigo	O-4
257. Reichel, R.	Margo	C-10
258. Reno, G.		H-21
259. Reymore, F.	Betty Jane	G-11
260. Rickloff, A.	Slapshot	O-19
261. Ridikas, V.		Keg
262. Riehl, R., Jr.	Lesperance	L-32
263. Robertson, W.	Lucifer	J-22
264. Roth, R.B.	Rx	C-23
265. Russell, D.	Silly Goose	H-24
266. Russell, E.F.		M-8
267. Russell, J.E., III	China Doll	K-6
268. Ryan, P.	Poem	L-119
269. Sample, D.	Winky	J-1
270. Santia, M.		M-11A
271. Sarver, R.	Escape	H-3
272. Scarlett, T.B.	Casbah	G-18
273. Schaefer, G.	Cogedy	J-3
274. Schlemmer, C.	Amourette	N-10
275. Schuler, D.	Buttercup	A-15
276. Schuler, J.		
277. Schultz, J.	Scaup Southern Cross	D-9
278. Schuyler, T.	E-Ho	L-20
279. Schwab, C., Jr.	Four Seasons	M-11A
280. Schwab, K.	Scotch On the Water	I-12
281. Scott, C.	Polito	E-7
282. Sedler, R.	Flying Cloud	G-10
283. Seibel, R.V.	Chapter I	H-10
284. Semple, J.	Family Affair	L-116
285. Sevin, R.	Iris	I-9
286. Shank, H.W.	Hudot IV	C-18
287. Shannon, D.		J-25
288. Sharrow, R.	Calypso	H-19
289. Shearon, D.		H-1
290. Sheeran, D.E.	Jill Lady	L-40
291. Sickert, F.T., Sr.	Roland I	L-21
292. Sigmond, R.S.	Fat Cat	J-27
293. Siner, G.M.		K-19
294. Sipple, G.M.	Heidi Ann IV	G-22
295. Skinner, C.S.	Holiday	C-16
296. Smith, A.D.	Odeon	E-15
297. Smith, D.J.		H-7
298. Soughan, L.E.	Chantey	E-1
299. Stainbrook, R.D.	Windspirit	Keg
300. Stark, N.	Lancer	J-9
301. Starr, A.M.	Gypsy Baron	I-3
302. Stevens, D.S.	Sandpiper II	O-2
303. Stevens, R.	Vector	J-7
304. Stitt, R.K.	Thanatos	H-8
305. Sturdevant, E.H.	Cloud Nine	A-9
306. Talling, H.C.	Nauti-Buoy	G-14
307. Tann, G.F.	Sunshine	N-3
308. Tate, J.	Poten Tate	J-2
309. Traphagen, P.A.	Soiree	G-7
310. Trippe, J.R.	Pork Chop	E-13
311. Trombetta, P.	Raindrops	L-111
312. Turns, H.P.		I-B
313. Ul, H.F.	Kathy-U	F-14
314. Veihdeffer, W.J.	TomBoy	C-8
315. Virgilio, N.	Jennick	J-18
316. Wagner, H.D.	Richmar	G-1
317. Walker, D.S.	Glass Slipper	H-6
318. Walker, R.D.		O-18
319. Walker, W.E.	Erie-sistible	C-27
320. Waller, R.E.	Cayenne	K-20
321. Warden, J.R.	Ichiban	J-11
322. Way, R.B.	Masker	F-16
323. Weaver, C.	Major III	A-17
324. Weber, E.V.	Gator	L-104
325. Weckesser, E.P.	Chanticleer	H-4
326. Weeden, W.W., Jr.	The Challenge	L-35
327. Weinheimer, R.J.	Lie-Mar	G-23
328. Weining, H.H.	Chatterbox	G-4
329. Westerdahl, R.A.	Jeanne	E-17
330. Weyand, T.E.	Tomfoolery	O-8
331. White, L.G.		O-14
332. White, N.C., Jr.	Blue Bell	L-26
333. Will, C. L.	Carosal	D-19
334. Williams, G.H., Jr.	Patticay	D-14
335. Wingerter, J.R., Jr.	Verdict	N-1
336. Winkler, F.	Wink V	J-13
337. Wirfel, E.W.	Yaka Tiki	I-A
338. Wolfe, P.	Valhalla	N-4
339. Wolford, J.M.	Constance	K-16
340. Woodard, R.S.	Ye olde Soak	A-4
341. Wright, W.F.		I-8
342. Zenker, R.F.	Good Hope	G-15
343. Zieziula, R.	Sunshine Gang	A-11
344. Zurn, R.W.		G-16

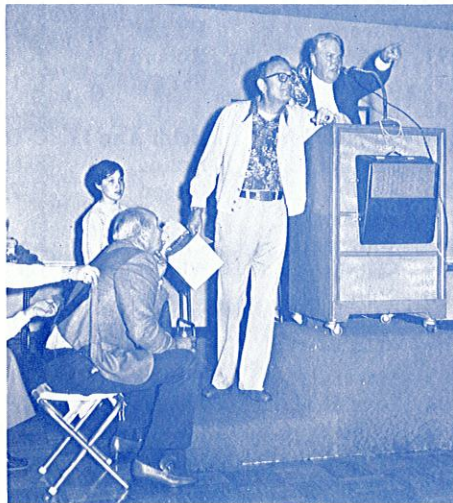
193. Lynch, J.R.	Merhaba	C-30
194. Lyons, R.C.	Easter Rabbit	D-6
195. Maimone, F.	Myrna's Ketcher II	I-3
196. McBrier, J.	Brier Rabbit	A-2
197. McCulloch, B.		O-11
198. McDonald, M.H.	Espirit	N-6
199. McEnery, J.H.	Silver Ann	G-6
200. McKinney, J.C.	Eleanor III	I-10
201. McMunn, H.E.	Spindrift	O-6
202. McTaggart, J.	Red Vixen	D-18
203. MacIvor, A.	Bluenose	C-9
204. Magnuson, P.	Njuta	M-9
205. Margetta, A.	Carino	A-14
206. Marsh, R.J.	Leo	G-12
207. Marshall, J.	Propos	B-9
208. Martin, E.E.	Sometimes	J-8



## "AUCTION MADNESS"



**SOLD!**



The "May Madness" of the Erie Yacht Club Auction is over for another year with memories of Roy Martine's quick wit and spontaneous humor, Eddie Irwin's and Ron Sigmund's wild shopping spree, the "his and her portable seats", the rush to buy Jack Tate's blue plastic carrying cases which netted \$87.00 for the Ladies' Auxiliary, the delicious buffet and the good comradeship of a really fun evening. It's just too bad more people couldn't be there to share in the revelry.

By way of statistics: 76 items were sold by 24 members who paid \$.50 cents each to register. There were 87 plastic cases sold and 9 sweat shirts and 2 "goodie bags" by the Ladies' Auxiliary. The Auxiliary will receive \$154.50 and the Yacht Club will realize a profit of about \$150.00 once expenses are paid.

There were many donations for which we say a great big "thank you". Brockway Marine, McAllister's and Sailyard all contributed items to be sold. Also, there were donations from: Art Fuhrman, Hank Lorence, Larry Penna, Al Margetta, Mac McDonald and Gus Neuss, who fished a battered duck decoy out of the water for us. To Jack Tate a special thank you for his generosity to the Auxiliary.

Now -- don't throw anything away! There will be another auction one of these days.

Doc and Dee Bressler



## A LANDLUBBER'S GLOSSARY OF NAUTICAL TERMS

*Nothing is more confusing to land people than the vocabulary employed afloat. Here's a tongue-in-cheek guide to salty sea talk that should do much to exacerbate the confusion for our non-boating members.*

**Flying Jib** - Any jib when the sheets have gone overboard.

**Freeboard** - Food and liquor supplied by the owner.

**Great Circle Route** - The ship's course when the rudder is jammed.

**Hanging Locker** - A small, enclosed space designed to keep foul weather gear wet and to turn all other clothing green.

**Hatch** - A container on board in which to keep eggs.

**Headway** - What you are making if you can get the toilet to work.

**Heel** - A command from the captain, usually ignored.

**Heaving line** - A rope used to hold onto while being sick.

**Knot Meter** - An instrument for measuring the speed with which any line will become tangled.

**Landlubber** - Anyone on board who wishes he were not.

**Latitude** - The number of degrees off course allowed a guest at the helm.

**Life Preserver** - A mildewed device for emergency use, stowed under the extra lines and anchors.

**Lubber line** - Two or more guests waiting to get ashore.

**Permanent mooring** - A sunken boat, anchored.

**Port** - A fine wine, always stowed on the left side of the boat.

**Reef Point** - The part of a rock sticking out of the water.

**Rhumb line** - Two or more crew members waiting for a drink. Spelling is archaic.

**Rope ladder** - A ladder designed to get you into the water but not back out.

**Running free** - Cruising without using the engine.

**Sextant** - A device for detecting the nighttime activity of guests.

**Shroud** - Equipment used in connection with the wake.

**Spinnaker** - A large sail used in dead calms to keep the crew busy.

**Spring line** - A rope purchased at the beginning of the season.

**Square rigger** - A rigger over 30.

**Swell** - A wave that's just great.

**Tell tale** - A crew member who lets the guests know that the skipper usually gets seasick.

**Editor's Note:** reprinted from "The Breeze" publication of the Dalhousie Yacht Club.



In keeping with the theme that the Log should be informative, we are publishing in this issue a directory of the "slips", listing boat owners, boat names (where available), and their location within the Yacht Club basin. We hope it will be informative and helpful. Once published, you might want to keep it up to date for your own reference and as a help to visitors at EYC.

We also have an interesting article by Hank Lorence on fishing. I would just like to interject that the E.Y.C. does have guide lines for fishermen which may take Hank off the "hook". Please read the insert on the Yacht Club House, Grounds, and Dock Rules.

Walt



## A PLEA FOR HELP!

It would be very appreciated if members owning dogs would walk them to the area along the southeast side of the "In" gate to do their "jobs". The majority of people are very considerate in this respect, however ..... Speaking from experience, it is a real "shocker" to step into the Clubhouse only to find the bottom of one shoe carrying a full "package" of you-know-what.

Thank you for your cooperation.

## "ACCOLADE OF THE MONTH"

Through the efforts of John Jagemann the Club secured a set of 8 foot long fork extensions. These will be used on the back-hoe to stack boat cradles. These were obtained free - so the price was right John! Thank you very much!



Erie Yacht Club is blessed with a Garden Club who quietly goes about the task of enhancing the beauty of our grounds through the planting of flowers. Last fall they spent many hours planting tulip, daffodil and narcissus bulbs which came forth in late April to assure us summer really was on the way. In mid-May the "green-thumb" crew again came down the hill, attired in foul weather gear to plant our summer flowers.

Undoubtedly, alot of us take all these pretties for granted, not realizing that it is a true "labor of love" by the wives of our members.

So, gals, we thank you - again and again!!!

Betty Waller



## LADIES GIFT SHOP PROCEEDS AID CLUB

The EYC Ladies Auxiliary would like to remind all of our members to stop at the gift case when you are in the clubhouse, or make a special trip in to check out the contents.

We have nice and cozy sweatshirts for those cool evenings that keep popping up during the summer. For those of you who wear glasses, we have convenient holders to keep you from providing free seeing equipment to the fish below. Also on display are the sponge mitts for washing boats and even cars. Check out our three different sizes of club burgees. To honor our neighbors across the "pond", we try to keep some Canadian flags on hand for those who are cruising across for a visit.

We have the above mentioned items and lots more (as our space will allow) for members, guests and for special gifts.

The proceeds from these sales go toward the annual gift the Ladies Auxiliary presents to the club such as: the picnic tables, the patio furniture, folding chairs and the folding banquet tables. We also redecorated the ladies lounge.

Contact any of the following for purchases: Barbara (in the office), Betty Waller (our Commodore's lady), Dorothy Knauer (wife of one of our board members), Ellie Matts (Treasurer of the Auxiliary), or Marj Behr (Live-a-board wife on the Deadline)

## THE LADIES HAVE DONE IT AGAIN



May 2nd, 1978 dawned bright and sunny (chilly, but at least the sun was shining). After months of planning and hard work by all Committees, the day of the 1978 Ladies' Tea and Fashion Show had arrived.

By 1:00 p.m. the Clubhouse was humming with the chatter of some 261 women. Following the welcome, the drawing was held for the Four Season's Boutique gift certificates; winners were Vilma Lohr, JoAnn Kuhl, and Jean English.



The fashions shown by the Four Season's Boutique, and professionally modeled by our member's wives, delighted everyone, after which tea was served. What an experience!! Watching the tea table aides doing their "thing", keeping the beautiful tea tables supplied with goodies for all.



To all of you who worked so hard in making this day a success, I thank you... you're great!!!

Betty Waller  
Commodore's Lady

## CONTRIBUTORS TO THIS ISSUE

Dick Waller  
Gus Neuss  
Fred Reymore  
Bill Ambro  
Norm Isler  
Marg Behr  
Earl Meyers  
Bob Rulli

Dick Robertson  
Doc and Dee Bressler  
Hank Lorence  
Betty Waller  
Bill Behr  
Sylvia Burdick  
John Hargather



## EYC CHAMPION KEGLERS '78



Top Team - (Jon & Marge Hall Absent from banquet)

First Place-Enterprise: John and Marge Hall, and Dick and Flora Sarver.

Second Place - Rainbow: Dick and Jean Weinheimer, and Dave and Ellie Sample.

Third Place - Magic: Ted and Carol Nyberg, and Jerry and Sue Tann.



The  
Girls  
Strike  
Again!

High Individual Series: John Hall 558 (men) and Guthrie Pratt 506 (women)

High Single Game: Nick Virgilio 224 and Marianne Shannon 188

Most Improved Average: Hal Bush and Berd Weislogel.

High Achievement: Agnes Robertson (bowled 184)



Kingpin "Herb" Makes His Mark



**SPLASH!** everyone's heard of the "busy one armed paper hanger." That same "paper hanger" went fishing. When asked how long the largest fish he had ever caught was, he proceeded to extend his one arm and said "about that long."

Each time you go fishing in your favorite fishing spot you have the chance to catch that "really big one." During the month of June the perch are near shore and they are running big. Catching "that really big one" could qualify you for the Pennsylvania Fish Commissions Angler Award. This is the states most distinguished angling award, which includes a certificate and embroidered emblem. The minimum inches for Yellow Perch are 14 inches for seniors and 12 inches for juniors. To register your catch you have to go to the Walnut Creek Fish Commission office and have the fish measured. So you juniors and seniors lets get Fishin'!

Some of our own E.Y.C. juniors have a jump on some of us already. As in the case of Brian Ashby, age seven: "I almost

had that garpike Mom! He was right in my net and I had to fall in and scare him away! Boy, am I dumb!" Fortunately for Brian, he had his U.S. Coast Guard approved vest on and was able to tell us this story. Fishing around the club is great fun for the kids. Linnell Ashby suggests a few good rules our children must comply with:

- \* No casting unless they're with their dad.
- \* No fishing next to someone else's boat without permission from the boat owner.
- \* And don't ask mom to bait the hook with those worms!

Hope to see you at the Husky Musky convention!

Your ole' sardine canner  
Hank Lorence



## DINING ROOM AND BAR

Monday: Dining Room & Bar Closed  
All Day  
Tuesday: Lunch: 11:30 - 2:00  
Dinner: 6:00 - 9:00  
Wednesday: Lunch: 11:30 - 2:00  
Dinner: 6:00 - 9:00  
Thursday: Lunch: 11:30 - 2:00  
Dinner: 6:00 - 9:00  
Friday: Lunch: 11:30 - 2:00  
Dinner: 6:00 - 9:30  
Saturday: Lunch: 11:30 - 2:00  
Dinner: 6:00 - 9:30  
Sunday: Brunch: 11:30 - 2:00  
Dinner: 6:00 - 8:00

### SPECIAL NOTE

Cold Sandwiches are available in the Lounge on Saturday and Sunday from 2:00 - 5:00. They are prewrapped and can be enjoyed in the Lounge or taken on board your boats. Advance notice will be required for large orders.

\*\*\*

RESERVATIONS ARE REQUESTED  
AT ALL TIMES FOR DINNER

## 1978 ERIE YACHT CLUB DIRECTORY OFFICERS & DIRECTORS

COMMODORE - Richard Waller (Supervision all areas) . . . . . 455-4332 or 456-4287  
VICE COMMODORE - Gustave Neuss (Dock assignment, Maint.) . . . . . 833-7500  
REAR COMMODORE - Clemens Schwab (House, Bar, Galley) . . . . . 833-1116  
FLEET CAPTAIN - Fred H. Reymore (Roads, Grounds, Security) . . . . . 866-0377  
SEC'Y - TREAS. - G. William Ambro (Records, Finance) . . . . . 455-8501  
Directors Harold Bush Jack Finn  
David Schuler Frank Knauer  
Howard Miskill Bruce Raimy  
John V. Schultz

### COMMITTEE CHAIRMEN

MEMBERSHIP - Wm. Behr, Sr. . . . . 866-9747  
ENTERTAINMENT - Roy Martine . . . . . 456-1868  
HISTORIAN - George Sipple . . . . . 455-1674 & 833-4022  
AUXILIARY FLEET CAPTAIN - William Bloomstine . . . . . 864-1732  
LONG RANGE PLANNING - Bruce Raimy . . . . . 833-4977  
SMALL BOAT FLEET CAPTAIN - Peter Gorny . . . . . 864-2100  
REPRESENTATIVE TO I.L.Y.A. - Robert Dodsworth . . . . . 455-1551  
SWIMMING POOL COMMITTEE - Frank Knauer . . . . . 899-3822

### EDITORIAL POLICY

The *Log* is the official publication of the Erie Yacht Club, and is for private distribution. Publication is scheduled for the fifteenth of February, April, June, August, October, and December. Articles of interest and notices of events are welcome; however, material should be submitted in writing to avoid error. Publication is at the option of the editor and the right to rewrite for brevity and clarity is reserved. Copy should be mailed on or before the twenty-first of the month preceeding publication date. Address to Editor Walter Veihdeffer, 4913 Wood Street, Erie, Pa 16509. Phone 866-3132.

## ERIE YACHT CLUB

P. O. BOX 648

ERIE, PA. 16512

### BULK RATE

U. S. POSTAGE

**PAID**

ERIE, PA.

PERMIT NO. 344

EDWARD C. IRVIN  
261 EAST 8th ST.  
ERIE, PA. 16503