



---

VOL. II No. 2

ERIE, PENNSYLVANIA

APRIL, 1970

---

Everyone sitting at the bar last Saturday afternoon watched with baited breath as the harbinger of summer moved gracefully up the bay, bone in her teeth and all! Yes, emotions were running high that afternoon as we witnessed 42' of fibreglass hull make the turn for her approach into the Erie Yacht Club basin. Slowly and smoothly, with the agility of a cat approaching its prey, Jack Amthor navigated his vessel, GLASSHOPPER, in to her stall thus making her the "first yacht in" for 1970! Congratulations to you, Jack!

So, fellow yachtsmen, another season is here! Time to get the bottom paint out, together with brushes, scrapers, sanders, screwdrivers, pliers and wrenches. Don't forget varnish, your choice of hull and deck paint, thinner, plenty of rags, wood filler and stain. Need you be reminded? Whisk brooms, vacuum cleaner, grease remover, window cleaner, mops, sponges, more rags, two cases of beer and a very patient wife. Of course, you fibreglass owners need only bring soap, a hose and a mop.

Alas, the season is here! Regardless of whether we be wood or glass, sail or power, we all share that same exhilarating feeling at this time of year when we make ready for another boating season.

Happy Launching,

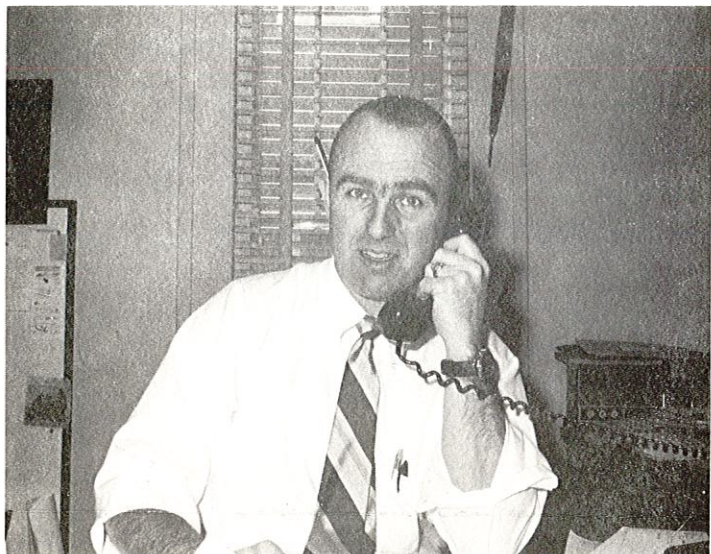
THE SCRIBE

---

Erie Yacht Club Officers: Commodore: Richard O. Loesel, Vice Commodore: George H. Sipple, Rear Commodore: Ralph L. DuVze, Jr., Fleet Captain: Fritz Busse, Jr., Secretary-Treasurer: T. Kenneth Welsh.  
Erie Yacht Club Directors: P/C George H. Deike, David Lund, Douglas Nagle, Jr., David B. Schuler, C. Dean Klahr, Jr., Allen R. Rickloff and Gordon F. Way.



# MEET YOUR OFFICERS



Commodore Loesel

## COMMODORE RICHARD LOESEL

This summer when you see the yawl, "Enigma" sailing down the bay, chances are good that the man behind her wheel is our Commodore, Richard Loesel. And a qualified skipper he is, too. . . both at the helm of "Enigma" and as the head of the Erie Yacht Club.

Rich began his yachting in 1929 when his parents brought him aboard the yacht "Spray" in a wooden picnic basket at the salty age of 3 months. Ten years later, he was skipper of a 15' Snipe.

In 1943, Rich joined the crew of Ken Eckerd's yawl "Enigma", of which he is currently skipper. Ken Eckerd wasn't the only one to recognize Rich Loesel's navigational talents, for in 1951 the U. S. Navy requested his services as an officer for four years of active duty. Today, Rich holds the rank of Commander in the Naval Reserves and is a qualified UDT/SEAL (Frogman).

In 1962, he was elected to the Board of Directors of the EYC and served on various house committees for six years.

Rich and his wife, Louise, and two sons, Douglas and David, live just up the hill from the EYC on Lincoln Avenue . . . a fitting location for a family so closely associated with the Erie Yacht Club.

NOTE: GEORGE SIPPLE IS CURRENTLY WORKING ON DOCK ASSIGNMENTS AND HAS NOT RECEIVED ALL OF THE WRITTEN DOCK APPLICATIONS. IF NO APPLICATION IS RECEIVED, A DOCK WILL NOT BE ASSIGNED!!!

# SWEETHEART BALL

THEY WERE THERE



Dr. Richard Stevens with guests, Miss Pauline Romanowicz and Dr. & Mrs. Edward Spiegel.



Mrs. Josephine Izzi and Mr. Gordon Way



Mr. and Mrs. Richard Waller



Past Commodore and Mrs. Benjamin Ginader.

## SCUTTLEBUTT

From the PROUD GRAND-PARENTS Department, we understand that Bill and Gladys Ambro have a grandson, born to Dave and Carmen Ambro on April 2nd.

Our sympathy is extended to the Skiing Division, Erie Yacht Club, where two members are recovering from accidents. Heidi Sipple, daughter of our Vice Commodore, George Sipple, and Jerry Emling's gal, Nancy Sherwood, both had close calls on the slopes, and our best wishes for speedy recovery do to them.

WELCOME HOME from the Bahamas...MacIvors, Brosses and Heavenly's!

Have you seen that GLORIFIED SLEEPING BAG that Gordie Way bought? We think it's called a Mongoose...anyway, it is only 42" high and has a speedometer reading of up to 200 mph. Wonder if it will fit on Masker II!

IT'S TRUE...Catboats still live! Your SCRIBE plans an early launching of the second slowest boat in the Great Lakes (the Niagra is the slowest). After undergoing major surgery at the Lund Clinic under the capable hands of "Drs." Jim Lund, John Douglas and Perky Pundt, the E-HO can look forward to another 30 years of great sailing.

### AMTHOR INTER-CLUB ARROW TROPHY

A large, beautiful new trophy for the Arrow Ice Boat Class has been donated by Jack Amthor. Designed and molded by Paul Brugger, with the assistance of Lou Klahr, you can soon see this impressive one-of-a-kind trophy in the Club's display case.

The overall winner of the annual Arrow races on our bay will have his name engraved on this perpetual trophy.

Races for the first such honor were run on Sunday, March 1, 1970. Results were as follows:

	<u>First Race</u>	<u>Second Race</u>	<u>Third Race</u>
First	Perky Pundt	Perky Pundt	Perky Pundt
Second	Dick Swanson	Audrey Brown	Dave Schuler
Third	Audrey Brown	Dick Swanson	Audrey Brown
Fourth	Clarence Skinner	Dave Schuler	Dick Swanson
Fifth	--	Jack Amthor	Clarence Skinner

Only one Doubles Race was run, with just three entries. Skippers, in order of finish were: Perky Pundt, Dick Swanson and Jack Amthor.

Congratulations go to Perky Pundt for placing first in all races, and thus being the first to have his name engraved on the new Amthor Trophy.

### WELCOME ABOARD

Let's give a hearty welcome to the following new members:

<u>Regular</u>	<u>Associate</u>	<u>Junior</u>
Robert Kubeja	John Dauer	William Salchak
George Rose	Carl Kollman	Jeffrey Helfand
Robert Marsh	David Jones	Charles McMillan
Thomas Kennedy	William Scott	Bernard Heavenly, Jr.
Paul Kolivoski	Richard Szymanski	Jim Lund

### NOTICE! NOTICE! NOTICE!

The Constitution states that any member three months in arrears with his Club account may be expelled by the Board of Directors!!



MARK YOUR CALENDAR FOR TUESDAY, APRIL 28TH!!!

Tuesday, April 28th will find Erie Yacht Club swarming with gals as they gather for the Annual Ladies Tea and Style Show. Fashions for the style show will be through the courtesy of the Boston Store.

Commodore's Lady, Louise Loesel, has announced the following Committee Chairmen:

Style Show	Mrs. Douglas B. Nagle
Decorations	Mrs. Bernard Heavenly
Reservations	Mrs. Ralph DuVze and Mrs. C. Dean Klahr, Jr.
Chances	Mrs. Dorothy Schuler and Mrs. T. Kenneth Welsh
Tea Tables	Mrs. George Sipple
Guest Tables	Mrs. Allen Rickloff

Models for the Style Show are as follows:

Mrs. John (Connie) Wolford and her daughter, Holly  
Mrs. Gib (Suzie) Loesel and her son, Mike  
Mrs. Harry (Suzie) Mueller and her daughter, Marjorie  
Mrs. Robert (Bea) Roth and her daughter, Susan  
Mrs. Jack (Suzie) McAllister and her son, Ned

ATTENTION BOWLERS!

Response has been good to our notice in the last issue of the LOG pertaining to bowling for next season.

At the present time interest has been shown in the following teams:

Mixed League - Bowling every OTHER Friday  
Ladies Afternoon League - Bowling weekly  
Ladies Evening League - Bowling weekly

Again, we invite all those interested in bowling to call Betty Waller at 455-4332. An organizational meeting for all bowlers will be held in early May. More info in the next LOG. Look for notice in July for organizational meeting of the next bowling season.

ANOTHER DATE TO MARK ON YOUR CALENDAR!

Don't forget the "April Showers" dance this April 25th!

## SMALL BOAT RACING NEWS

Thanks again to Dick and Betty Waller--your race schedule has been typed, printed, sorted, stapled, folded and mailed. A big job, well done!

Your first race is just a few weeks away, so let's get those boats ready for a big turn out on opening day. Remember, it takes THREE boats to make a class.

Your Race Committee's season started some months ago with serious planning of the 1970 season. Although the schedule somewhat follows the format of the 1969 season, careful planning was made to honor your requests, such as leaving holidays open, and leaving room for unplanned regattas and events. We moved the Jr. Trophy Series so it would not coincide with the Wakefield Series, and separated the Bob Sternberg and Gordon Altman Memorial Trophy Series. This season, the Spring Series consists of six, instead of four, races and the Memorial Series will be completed on Memorial Weekend. Note the Indian Summer Regatta--we are expecting a big turn out for this event.

Your Race Committee's early season includes applications, charts, race schedules, estimates of number of participants, spectator boats and R.O. boats to both the Cleveland Coast Guard and the Pa. Fish Commission, before we can run a race. This has been done. As of this writing, approval has not yet been received.

Correspondence between myself, O-D and O.Y. and Dr. N. E. Richards of the Dixie Inland Yacht Racing Association resulted in our receiving an up-grading of the Portsmouth Handicap System. This is the system we use for the open class and all handicap races. We now have an accurate handicap system for about four hundred boats, including off-shore classes (aux. and M.O.R.C.). This system is figured on past performance on an international basis. Different wind conditions are considered. The rating changes as the wind increases, e.g. the Fire Ball had a constant rating of 87. The F. B. was hurting in light air, but couldn't be beat in heavy air. Now the F. B. rating varies from 90.5 to 80.9, depending on wind velocity.

This season, we will follow the trend of other racing clubs and change our visual signals to white for ten minute warning, blue for five minute warning and red for start. This should make for better understanding of what time period you are working on.

I still have a few 1969 trophies I haven't been able to deliver. If you don't receive them before, I will have them aboard the R.C. boat on race day.

I'll be seeing you on May 10th at 10:00 a.m. sharp!

GAIL GARREN

# ERIE YACHT CLUB RACE SCHEDULE 1970

DATE	CLASS	STARTING GUN	NO. RACES	EVENTS
May 10 Sun.	Small Boats	10:00 a.m.	2	Spring Series #1 and #2
May 17 Sun.	Small Boats	10:00 a.m.	2	Spring Series #3 and #4
May 24 Sun.	Small Boats	10:00 a.m.	2	Spring Series #5 and #6 (2nd. Race, Star Fleet Championship #1)
May 30 Sat.	Small Boats	2:00 p.m.	2	Memorial Series #1 and #2 (2nd Race, Star Fleet Champ. #2)
May 31 Sun.	Small Boats	10:00 a.m.	2	Memorial Series #3 and #4 (2nd Race, Star Fleet Champ. #3)
June 6 & 7 Sat & Sun	Small Boats	ERIE YACHT CLUB NINTH ANNUAL REGATTA		
June 10 Wed.	Small Boats	7:00 p.m.	1	Evening Series #1 (Star, Pomeroy Trophy #1)
June 14 Sun.	Small Boats	10:00 a.m. Common Start	2	Sternberg Trophy #1 and #2 (Hdcp. Flag Officers Trophy #1 and #2 (class))
June 17 Wed.	Small Boats	7:00 p.m.	1	Evening Series #2 (Star, Pomeroy Trophy #2)
June 21 Sun.	Aux.	10:00 a.m.	1	Gilmore Trophy (Start in lake)
June 21 Sun.	Small Boats	10:00 a.m. Common Start	2	Sternberg Trophy #3 and #4 (Hdcp. Flag Officers Trophy #3 and #4 (class))
June 24 Wed.	Small Boats	7:00 p.m.	1	Evening Series #3 (Star, Pomeroy Trophy #3)
June 28 Sun.	Small Boats	10:00 a.m. Common Start	2	Altman Trophy #1 and #2 (Hdcp.) Flag Officers Trophy #5 and #6 (class)
June 28 through July 2	Aux.	SEE INTERCLUB SERIES RACE CIRCULAR		
July 8 Wed.	Small Boats	7:00 p.m.	1	Evening Series #4





ERIE YACHT CLUB RACE SCHEDULE 1970 - Page 2

<u>DATE</u>	<u>CLASS</u>	<u>STARTING GUN</u>	<u>NO. RACES</u>	<u>EVENTS</u>
July 11 Sat.	Aux.		1	Port Huron to Mackinac Island Lake Erie Race Leave Buffalo for Toledo
July 12 Sun.	Aux.	10:00 a.m.	1	Summer Series #1 (Start in Lake)
July 12 Sun.	Small Boats	10:00 a.m. Common Start	2	Altman Trophy #3 & #4 (Hdcp.) Flag Officers Trophy #7 & #8 (class)
July 15 Wed.	Small Boats	7:00 p.m.	1	Evening Series #5
July 19 Sun.	Small Boats	10:00 a.m.	2	Summer Series #1 and #2
July 22 Wed.	Small Boats	7:00 p.m.	1	Evening Series #6
July 26 Sun.	Aux.	10:00 a.m.		Summer Series #2 (Start in lake)
July 26 Sun.	Small Boats	10:00 a.m.	2	Summer Series #3 and #4 (Stars Optional, lake or bay)
July 29 Wed.	Small Boats	7:00 p.m.	1	Evening Series #7
Aug. 1 Sat.	Aux.	9:00 a.m.	1	Erie to Barcelona, Koehler Cup (Start in lake)
Aug. 1 Sat.	Small Boats	10:00 a.m. 2:00 p.m.	2 1	Junior Trophy Series #1 and #2 Junior Trophy Series #3
Aug. 2 Sun.	Aux.	9:00 a.m.	1	Barcelona to Erie, Koehler Cup (Finish in lake)
Aug. 2 Sun.	Small Boats	10:00 a.m.	2	Junior Trophy Series #5 and #6
Aug. 9 Sun.	Aux.	10:00 a.m.	1	Summer Series #3 (Start in lake)
Aug. 9 Sun.	Small Boats	10:00 a.m.	2	Summer Series #5 and #6 (Stars optional, lake or bay)
Aug. 16 Sun.	Small Boats	10:00 a.m. 2:00 p.m.	2 1	Club Championship Series #1 and #2 Club Championship Series #3
Aug. 22 Sat.	Aux.		1	Rocky River to Mentor (FALCON CUP)



ERIE YACHT CLUB RACE SCHEDULE 1970 - Page 3

<u>DATE</u>	<u>CLASS</u>	<u>STARTING GUN</u>	<u>NO. RACES</u>	<u>EVENTS</u>
Aug. 23 Sun.	Small Boats	10:00 a.m.	2	Club Championship Series #4 and #5
Aug. 28 & 29 Fri. & Sat.	Aux.	8:30 P.M.	1	Interstate Race (Mentor to Erie) (Finish in lake)
Sept. 13 Sun.	Aux.	2:00 p.m.	1	Fall Bay Series #1 (See Race Circular for course)
	Small Boats	2:05 p.m.	1	Fall Bay Series #1 - (Handicap)
Sept. 20 Sun.	Aux.	2:00 p.m.	1	Fall Bay Series #2 (See Race Circular for course)
	Small Boats	2:05 p.m.	1	Fall Bay Series #2 - (Handicap)
Sept. 27 Sun.	Aux.	2:00 p.m.	1	Fall Bay Series #3 (See Race Circular for course)
	Small Boats	2:05 p.m.	1	Fall Bay Series #3 - (Handicap)
Oct. 4 Sun.	Aux.			OPEN DATE
Oct. 3 Sat.				SMALL BOAT DINNER AND TROPHY PRESENTATION
Oct. 10 & 11 Sat. & Sun.				RHODES BANTAM & THISTLE INDIAN SUMMER REGATTA

STATE OF NEW YORK

COUNTY OF ALBANY		TOWN OF ALBANY		STAGE
1890		1891		1892
1893		1894		1895
1896		1897		1898
1899		1900		1901
1902		1903		1904
1905		1906		1907
1908		1909		1910
1911		1912		1913
1914		1915		1916
1917		1918		1919
1920		1921		1922
1923		1924		1925
1926		1927		1928
1929		1930		1931
1932		1933		1934
1935		1936		1937
1938		1939		1940
1941		1942		1943
1944		1945		1946
1947		1948		1949
1950		1951		1952
1953		1954		1955
1956		1957		1958
1959		1960		1961
1962		1963		1964
1965		1966		1967
1968		1969		1970
1971		1972		1973
1974		1975		1976
1977		1978		1979
1980		1981		1982
1983		1984		1985
1986		1987		1988
1989		1990		1991
1992		1993		1994
1995		1996		1997
1998		1999		2000
2001		2002		2003
2004		2005		2006
2007		2008		2009
2010		2011		2012
2013		2014		2015
2016		2017		2018
2019		2020		2021
2022		2023		2024
2025		2026		2027
2028		2029		2030
2031		2032		2033
2034		2035		2036
2037		2038		2039
2040		2041		2042
2043		2044		2045
2046		2047		2048
2049		2050		2051
2052		2053		2054
2055		2056		2057
2058		2059		2060
2061		2062		2063
2064		2065		2066
2067		2068		2069
2070		2071		2072
2073		2074		2075
2076		2077		2078
2079		2080		2081
2082		2083		2084
2085		2086		2087
2088		2089		2090
2091		2092		2093
2094		2095		2096
2097		2098		2099
2100		2101		2102
2103		2104		2105
2106		2107		2108
2109		2110		2111
2112		2113		2114
2115		2116		2117
2118		2119		2120
2121		2122		2123
2124		2125		2126
2127		2128		2129
2130		2131		2132
2133		2134		2135
2136		2137		2138
2139		2140		2141
2142		2143		2144
2145		2146		2147
2148		2149		2150
2151		2152		2153
2154		2155		2156
2157		2158		2159
2160		2161		2162
2163		2164		2165
2166		2167		2168
2169		2170		2171
2172		2173		2174
2175		2176		2177
2178		2179		2180
2181		2182		2183
2184		2185		2186
2187		2188		2189
2190		2191		2192
2193		2194		2195
2196		2197		2198
2199		2200		2201
2202		2203		2204
2205		2206		2207
2208		2209		2210
2211		2212		2213
2214		2215		2216
2217		2218		2219
2220		2221		2222
2223		2224		2225
2226		2227		2228
2229		2230		2231
2232		2233		2234
2235		2236		2237
2238		2239		2240
2241		2242		2243
2244		2245		2246
2247		2248		2249
2250		2251		2252
2253		2254		2255
2256		2257		2258
2259		2260		2261
2262		2263		2264
2265		2266		2267
2268		2269		2270
2271		2272		2273
2274		2275		2276
2277		2278		2279
2280		2281		2282
2283		2284		2285
2286		2287		2288
2289		2290		2291
2292		2293		2294
2295		2296		2297
2298		2299		2300
2301		2302		2303
2304		2305		2306
2307		2308		2309
2310		2311		2312
2313		2314		2315
2316		2317		2318
2319		2320		2321
2322		2323		2324
2325		2326		2327
2328		2329		2330
2331		2332		2333
2334		2335		2336
2337		2338		2339
2340		2341		2342
2343		2344		2345
2346		2347		2348
2349		2350		2351
2352		2353		2354
2355		2356		2357
2358		2359		2360
2361		2362		2363
2364		2365		2366
2367		2368		2369
2370		2371		2372
2373		2374		2375
2376		2377		2378
2379		2380		2381
2382		2383		2384
2385		2386		2387
2388		2389		2390
2391		2392		2393
2394		2395		2396
2397		2398		2399
2400		2401		2402
2403		2404		2405
2406		2407		2408
2409		2410		2411
2412		2413		2414
2415		2416		2417
2418		2419		2420
2421		2422		2423
2424		2425		2426
2427		2428		2429
2430		2431		2432
2433		2434		2435
2436		2437		2438
2439		2440		2441
2442		2443		2444
2445		2446		2447
2448		2449		2450
2451		2452		2453
2454		2455		2456
2457		2458		2459
2460		2461		2462
2463		2464		2465
2466		2467		2468
2469		2470		2471
2472		2473		2474
2475		2476		2477
2478		2479		2480
2481		2482		2483
2484		2485		2486
2487		2488		2489
2490		2491		2492
2493		2494		2495
2496		2497		2498
2499		2500		2501
2502		2503		2504
2505		2506		2507
2508		2509		2510
2511		2512		2513
2514		2515		2516
2517		2518		2519
2520		2521		2522
2523		2524		2525
2526		2527		2528
2529		2530		2531
2532		2533		2534
2535		2536		2537
2538		2539		2540
2541		2542		2543
2544		2545		2546
2547		2548		2549
2550		2551		2552
2553		2554		2555
2556		2557		2558
2559		2560		2561
2562		2563		2564
2565		2566		2567
2568		2569		2570
2571		2572		2573
2574		2575		2576
2577		2578		2579
2580		2581		2582
2583		2584		2585
2586		2587		2588
2589		2590		2591
2592		2593		2594
2595		2596		2597
2598		2599		2600
2601		2602		2603
2604		2605		2606
2607		2608		2609
2610		2611		2612
2613		2614		2615
2616		2617		2618
2619		2620		2621
2622		2623		2624
2625		2626		2627
2628		2629		2630
2631		2632		2633
2634		2635		2636
2637		2638		2639
2640		2641		2642
2643		2644		2645
2646		2647		2648
2649		2650		2651
2652		2653		2654
2655		2656		2657
2658		2659		2660
2661		2662		2663
2664		2665		2666
2667		2668		2669
2670		2671		2672
2673		2674		2675
2676		2677		2678
2679		2680		2681
2682		2683		2684
2685		2686		2687
2688		2689		2690
2691		2692		2693
2694		2695		2696
2697		2698		2699
2700		2701		2702
2703		2704		2705
2706		2707		2708
2709		2710		2711
2712		2713		2714
2715		2716		2717
2718		2719		2720
2721		2722		2723
2724		2725		2726
2727		2728		2729
2730		2731		2732
2733		2734		2735
2736		2737		2738
2739		2740		2741
2742		2743		2744
2745		2746		2747
2748		2749		2750
2751		2752		2753
2754		2755		2756
2757		2758		2759
2760		2761		2762
2763		2764		2765
2766		2767		2768
2769		2770		2771
2772		2773		2774
2775		2776		2777
2778		2779		2780
2781		2782		2783
2784		2785		2786
2787		2788		2789
2790		2791		2792
2793		2794		2795
2796		2797		2798
2799		2800		2801
2802		2803		2804
2805		2806		2807
2808		2809		2810
2811		2812		2813
2814		2815		2816
2817		2818		2819
2820		2821		2822
2823		2824		2825
2826		2827		2828
2829		2830		2831
2832		2833		2834
2835		2836		2837
2838		2839		2840
2841		2842		2843
2844		2845		2846
2847		2848		2849
2850		2851		2852
2853		2854		2855
2856		2857		2858
2859		2860		2861
2862		2863		2864
2865		2866		2867
2868		2869		2870
2871		2872		2873
2874		2875		2876
2877		2878		2879
2880		2881		2882
2883		2884		2885
2886		2887		2888
2889		289		





EDWARD C. IRVIN  
261 E. 8TH ST.  
ERIE, PA. 16503

P. O. Box 648  
Erie, Pa.



Sec. 34.66 P. L. & R  
U. S. Postage  
PAID  
Permit No. 344  
Erie, Pa.