

ERIE YACHT CLUB RACE FLEET
RACE INSTRUCTIONS
2016



Magic
 2015 Boat of the Year

Erie Yacht Club Racing Fleet





www.erieyachtclub.org

Please take the time to thank our generous friends
and support our business sponsors:

American Cruising Sails
Anonymous
Bort Insurance Services
Coletch Marine Hardware
Erie Beer Company
Erie Yacht Club
Haller Construction Co.
Hertel & Brown Physical Therapy
Home Instead Senior Care
James McBrier
Peter Lund-Urology Associates
Pony Express
RCR Yachts
Thomas Schuyler, III
Urbaniak Brother Quality Meats
Wolford Family

TABLE OF CONTENTS

RACE SPONSORS AND PATRONS	2
TABLE OF CONTENTS	3
EYCRF OFFICIAL SCHEDULE	4
FLEET OFFICERS AND COMMITTEES	5
CURRENT CHAMPIONS	6
RACE INSTRUCTIONS	
DEFINITIONS	7
ELIGIBILITY	8
TEMPORARY RATINGS	8
YACHT ENTRY	9
OWNER'S RESPONSIBILITY	9
DIVISIONS	9
SCORING	10
BOAT OF THE YEAR, CLASS CHAMPIONS & AWARDS	10
RULES	11
NOTICE TO COMPETITORS	11
CHANGES IN SAILING INSTRUCTIONS	11
RACE SCHEDULE	11
COURSES AND MARKS	11
THE START	12
GENERAL RECALL	12
THE FINISH	13
SHORTENING OF COURSE	13
TIME LIMITS	13
PROTESTS	13
RESULTS	13
SAFETY AND EQUIPMENT	14
COMMUNICATIONS	14
RACE COURSES	
COURSE DESIGNATIONS and MARKS	15
PERMANENT BAY MARKS	16
RACE COURSE CONFIGURATIONS	17-18
MEMORIAL DAY LIGHTHOUSE RACE	19
NIGHT LIGHT HOUSE RACE	20
PORT DOVER RACES	21
KOEHLER CUP RACES	22-23
BLUFF BAR RACE for WOLFORD TROPHY	24
FJAM STARTS AT THE LIGHT HOUSE	
LIGHTHOUSE START INSTRUCTIONS	25
LIGHTHOUSE START AREA DIAGRAM	26
FINISH FORMS	27-28
APPENDIX	
PAST AWARD WINNERS - 1907 TO PRESENT	see web page

2016 RACING FLEET SCHEDULE											OFFICIAL
Race Committee	START	Location	JAM &			RACE & SPONSOR					
	GPS TIME		BOY	ZURN	FJAM	NOTE					
1	WED 11-May	7:00PM	LH			1	FAMILY JAM - BRIER PATCH SERIES #1 OF 3				
2	SUN 15-May	10:00AM	BAY		1,2		SPIN BRIER PATCH SERIES #1&2 OF 3				
3	WED 18-May	7:00PM	LH			2	FAMILY JAM - BRIER PATCH SERIES #2 OF 3				
4	SUN 22-May	10:00AM	BAY	1,2	3,4		HALLER CONSTRUCTION SPRING SERIES #1 & 2 of 3				
5	WED 25-May	7:00PM	LH			3	FAMILY JAM - BRIER PATCH SERIES #3 OF 3				
6	SUN 29-May	9:00AM	LH	3	5	O/A	P,A	MORK TROPHY LIGHTHOUSE RACE / SPIN BRIER PATCH SERIES #3 OF 3			
7	WED 1-Jun	7:00PM	BAY	4	6		HALLER CONSTRUCTION SPRING SERIES #3 of 3				
	SAT 4-Jun						6 th ANNUAL MARINER'S BALL				
	SUN 5-Jun						MAKE UP DATE 1				
8	WED 8-Jun	7:00PM	BAY			4	FAMILY JAM - PONY EXPRESS SPRING SERIES #1 OF 3				
	Jun 10-12, 2016						LOUIS VUITTON AMERICA'S CUP WORLD SERIES RACES-CHICAGO				
	SAT 11-Jun						RAFT-UP				
9	SUN 12-Jun	10:00AM	BAY			5,6	P,A	FAMILY JAM - PONY EXPRESS SPRING SERIES #2 & 3 of 3			
10	WED 15-Jun	7:00PM	BAY	5	7		URBANIYAK BROS QUALITY MEATS SUMMER SERIES #1 of 4. GILMORE CUP #1 of 3				
	17-Jun						June 17-26 Cleveland Race Week (CRW)				
	SAT 18-Jun						BAY SWIM IX 2016 Full moon Jun 20				
11	SUN 19-Jun	11:00AM	LAKE	6,7	8,9		URBANIYAK BROS QUALITY MEATS SUMMER SERIES #2&3 of 4. GILMORE CUP #2&3 of 3				
12	WED 22-Jun	7:00PM	BAY			7	FAMILY JAM - HOME INSTEAD SENIOR CARE HEATWAVE #1 of 3				
13	FRI 24-Jun					10	2016 - 59th ANNUAL INTERCLUB CRUISE				
	SAT 25-Jun					10	RACE 1 ERIE TO PORT DOVER RA Crews, please respect EYC parking rules				
	SUN 26-Jun					11	RACE 2 LONG POINT BAY RACE Skippers, please help everyone comply				
	MON 27-Jun					12	RACE 3 PORT DOVER TO PORT COLBORNE				
	TUE 28-Jun					13	RACE 4 PORT COLBORNE TO BUFFALO YC downtown				
	WED 29-Jun					14	RACE 5 BUFFALO COURSE RACE				
14	WED 6-Jul	7:00PM	BAY			8	FAMILY JAM - HOME INSTEAD SENIOR CARE HEATWAVE #2 of 3				
	FRI 8-Jul						EYC FOUNDATION RAW BAR PARTY @ RICKLOFF COMMUNITY BOATHOUSE				
	FRI 8-Jul	7:00PM	LH				JAM BORT INSURANCE-JUNIORS RACERS CUP #1 of 2 Fleet members act as RC				
	SUN 10-Jul						MAKE UP DATE 2				
15	WED 13-Jul	7:00PM	BAY			9	FAMILY JAM - HOME INSTEAD SENIOR CARE HEATWAVE #3 of 3				
	FRI 15-Jul		LH				JAM AMERICAN CRUSING SAILS - REGATTA DES FEMMES 1 of 2 Men serve as RC.				
	SAT 16-Jul						RAFT-UP				
16	SUN 17-Jul	10:00AM	LH			10,11	P,A	FAMILY JAM - HERTEL&BROWN PHYSICAL THERAPY SUMMER SERIES #1 & 2 OF 3			
	JUL 17-21						JR. BAY WEEK - PUT IN BAY OHIO Full moon Jul 19				
17	WED 20-Jul	7:00PM	BAY		15		URBANIYAK BROS QUALITY MEATS SUMMER SERIES #4 of 4.				
	FRI JUL 22,23,24						YOUNGSTOWN YC REGATTA Can-Am Challenge J-70 Great Lakes Champ				
18	WED 27-Jul	7:00PM	LH			12	FAMILY JAM - HERTEL&BROWN PHYSICAL THERAPY SUMMER SERIES #3 of 3				
	SUN 31-Jul						MAKE-UP DATE 3				
19	WED 3-Aug	7:00PM	LH			13	FAMILY JAM - SCHUYLER FAMILY SUNSET SERIES #1 OF 3				
	WED 3-Aug						EWYC DEEPWATER RACE TO PUT IN BAY				
	FRI 5-Aug	FRI SAT SUN					I-LYA BAY WEEK - PUT IN BAY, OHIO AUG 4-7, 2016				
	SAT 6-Aug						ERIEGATTA REYBURN JUNIOR RACING TEAM REGATTA @ EYC				
	WED 10-Aug	7:00PM	LH				JAM	AMERICAN CRUSING SAILS - REGATTA DES FEMMES #2 of 2 Men serve as RC.			
	FRI 12-Aug	8:00AM	R2				O/A	JAM - ERIE TO ASHTABULA KOEHLER CUP			
20	SAT 13-Aug	7:00AM	CH LH	8	16		P	COLETECH MARINE HARDWARE KOEHLER CUP 1 - ERIE to ASHTABULA			
	SUN 14-Aug	8:00AM		9	17	O/A		COLETECH MARINE HARDWARE KOEHLER CUP 2 - ASHTABULA to ERIE			
	SAT 13-Aug							79th FALCON CUP, CYC ROCKY RIVER to MHYC MENTOR OH			
	SAT 13-Aug							WINDMILL REGATTA @ EYC Full moon Aug 18			
	WED 17-Aug	7:00PM	LH				JAM	BORT INSURANCE-JUNIORS RACERS CUP #2 of 2 Fleet members act as RC			
21	FRI 19-Aug	8:00PM	LH		18	O/A		NIGHT LIGHT HOUSE RACE for the COMMODORE'S CHAIR SUNSET 8:16			
	SAT 20-Aug							RAFT-UP			
	SAT 20-Aug							7 th ANNUAL CARDBOARD BOAT RACE @ BAYFRONT MARITIME CENTER			
	SAT 20-Aug							LAKE ERIE SOLO CHALLENGE Aug 22-25 Finish @ EYC			
22	SUN 21-Aug	10:00AM	BAY	19, 20	O/A			GOV/MAYOR'S CUP, FLAGSHIP NIAGARA CUP CELEBRATE ERIE AUG 18-21			
23	WED 24-Aug	7:00PM	BAY			14		FAMILY JAM - SCHUYLER FAMILY SUNSET SERIES #2 OF 3			
	SAT 27-Aug	5:00PM	LH				P, A	EYCRF CHAIR PARTY @ EYC LIGHTHOUSE			
	SUN 28-Aug	TBA	BAY				P, A	32nd ANNUAL EYC CHARITY REGATTA			
24	WED 31-Aug	7:00PM	BAY			15		FAMILY JAM - SCHUYLER FAMILY SUNSET SERIES #3 OF 3			
25	SUN 4-Sep	10:00AM	BAY			16,17		FAMILY JAM - RCR YACHTS FULL MOON SERIES #1 & 2 OF 3			
26	WED 7-Sep	6:30PM	BAY	10	21			ECKERD CUP #1			
	FRI 9-Sep							TALL SHIPS ERIE SEPT 9-11			
	SAT 10-Sep							2 nd ANNUAL EYCF WOODEN BOAT RACE			
27	SUN 11-Sep	10:00AM	BAY	11,12	22, 23			ECKERD CUP #2 & 3 OF 3			
28	WED 14-Sep	6:30PM	LH			18		FAMILY JAM - RCR YACHTS FULL MOON SERIES #3 OF 3			
29	SAT 17-Sep	7:00AM	LH		24			ERIE TO PORT DOVER via Bluff Bar. WOLFORD TROPHY #1 OF 2			
	SUN 18-Sep	8:00AM	ED2		25			PORT DOVER TO ERIE. WOLFORD TROPHY #2 OF 2			
30	WED 21-Sep	6:30PM						MAKE UP DATE 4			
	SAT 24-Sep							FALL LIGHTENING REGATTA			
31	SUN 25-Sep	11:00AM	BAY	12	26	O/A	P, A	THOMAS CARROLL - REVERSE HANDICAP RACE Full moon Sept 27th			
	SUN 2-Oct	NOON	LH	12	26	24	P, A	GREAT CHILI RACE OFF \$10 fee 11 AM SKIPPER'S MEETING & REGISTRATION			
	SAT 5-Nov		EYC					RACING FLEET BANQUET			

BOY = PHRF BOAT OF THE YEAR RACE. ZURN = ZURN TROPHY RACE. FJAM = FAMILY JAM DIVISION RACES. SEE RACE INSTRUCTIONS FOR TROPHY SCORING PARAMETERS.
O/A = JAM CLASS SCORED OVERALL USING ORIGINAL NON-ADJUSTED RATING. LH= START @ EYC LIGHT HOUSE. P= EYC DECK PARTY A=AWARDS PRESENTATION

1/21/2016		Exec	2016 EYC RACING FLEET COMMITTEE VOLUNTEERS				
Position	Comm	Chair	Name	Home	Work	Cell	Email
Fleet Chairman	E	C	Alex Miller		453-4331	449-9097	andyf@fh-group.com
Asst. Fleet Chairman	E	C	Frank Jarecki		474-2666 ext. 102	460-3074	andyf@fh-group.com
Secretary	E	C	Jacqueline Bacco		(412)	559-8217	jacqueline.bacco@gmail.com
Treasurer	E	C	Andy Fritts			464-5625	andyf@fh-group.com
Communications	E	C	P/C Dave Heitzenrater			449-5126	dddd@neo.rr.com
Principal Race Officer (PRO)	E	C	Mike Squeglia			392-8491	msqueglia@bfields.com
Assistant PRO			Aimee Gevitz			273-0828	snar4alg@gmail.com
Race Committee	E	C	Mike Squeglia			392-8491	msqueglia@bfields.com
Committee Boat Officer	E	C	V/C John Orlando	454-7755	459-3144	450-0475	jmorlando@neo.rr.com
Advisor/Member at Large	E		P/C Ron Busse			450-1588	busseron@aol.com
Advisor/Member at Large	E		P/C Matt Niemic			440-0910	mattniemic@verizon.net
One Design Fleet	E	C	Andy Kalivoda			449-0278	andrew_kalivoda@bd.com
Solo Racers Chairman	E	C	F/C Greg Gorny	833-2093	870-3035	323-1743	grg817@netzero.com
Protest	E	C	A V/C David Haller				dhaller48@gmail.com
			B P/C Brad Enterline	454-0110	453-5004	881-0796	bkelaw@gmail.com
one member from each fleet			C Thomas Schuyler III				tomschuyler@roadrunner.com
			D P/C Tom Trost	833-5333			faytomel@aol.com
Immediate Past Chairman	E		A.J. Ficcardi			572-5621	joker1373@hotmail.com
Social Media		C	A.J. Ficcardi			572-5621	joker1373@hotmail.com
EYC Board Liaison	E	C	R/C Greg Gorny	833-2093	870-3035	323-1743	grg817@netzero.com
Education Committee	E	C	Comm John Orlando	454-7755	459-3144	450-0475	jmorlando@neo.rr.com
			A.J. Ficcardi			572-5621	joker1373@hotmail.com
Social Committee	E	C	P/C Tom Trost	833-5333			faytomel@aol.com
			Justina Tushak			449-0500	jtushak@tushakaccounting.com
			Debbie Amatangelo	838-9910			ama2267@aol.com
Ways and Means		C	Kay Fritts	866-3981			frit04@yahoo.com
			Fay Trost	833-5333			faytomel@aol.com
ILYA Representative			Monica Bloomstine	453-3700			
PHRF Measurement			Jon Tushak		870-1377	434-2406	jctpe@neo.rr.com
PHRF LE Handicapper			Jon Tushak		870-1377	434-2406	jctpe@neo.rr.com
Results	E	C	P/C Dave Heitzenrater			449-5126	dddd@neo.rr.com
			Alex Miller		453-4331	449-9097	millera@lcbalife.org
Marks Committee		C	Bill Hertel			434-6346	willehop@velocity.net
			A.J. Ficcardi			572-5621	joker1373@hotmail.com
			Alex Miller		453-4331	449-9097	millera@lcbalife.org
Awards Committee	E	C	Mike Mashyna	868-7401	877-2488	881-8203	mmashyna@roadrunner.com
			Rick Barner	459-1670	459-1670		rbarner@velocity.net
			Ron Hamilton	882-6692			rdh1ton@aol.com
Race Instruction Book		C	P/C Dave Heitzenrater			449-5126	dddd@neo.rr.com
			Russ Thompson				russ@dbconsultants.com
Historian			Russ Thompson				russ@dbconsultants.com
Sponsorship	E	C	Tom Madura	864-3165	870-3026		tom.madura@basf.com

ERIE YACHT CLUB RACING FLEET 2015 SEASON CHAMPIONS

MAGIC BOAT OF THE YEAR

SPINNAKER DIVISION CLASS CHAMPIONS

PHRF A	MAGIC	BILL HERTEL
PHRF B	GRAFFITI	PAT HUNTLEY



FAMILY JAM DIVISION CLASS CHAMPIONS

FJAM-A	RAVEN	DAVE HEITZENRATER
FJAM-B	POWDERHOUND	RON HAMILTON
FJAM-C	JOKER	A.J. FICCARDI
FJAM-D	KEYA	P/C TOM TROST

Congratulations to these racers and their fine crews for outstanding performances and dedication to the sport of sailboat racing!

RACE INSTRUCTIONS

NOTE – CHANGES FROM THE PREVIOUS YEAR ARE SHOWN IN BLUE FONT.

I. DEFINITIONS

Unless otherwise expressly defined below, terms used in these Sailing Instructions shall have the meaning assigned to them in the Racing Rules of Sailing promulgated by the International Federation of Sailing (“ISAF”). Undefined terms should be construed in the sense ordinarily understood in nautical or general use.

The following terms, when used in these Sailing Instructions, have the following meanings:

“Erie Yacht Club Racing Fleet” (EYCRF) refers to the entire sailboat racing fleet and support personnel who participate in one or more sailboat races on the Official Race Schedule. This includes the Race Committee, as well as yacht owners, skippers, and crew of participating yachts. For the purpose of this definition, a “participating yacht” is a yacht for which dues have been paid for a racing season, or for a particular race (if applicable). A yacht for which dues are paid for a racing season shall be considered “participating” from the time dues are paid until the start of the first race of the following year’s racing season. A yacht for which dues have been paid only for a particular race(s) shall be considered participating only for the particular race(s).

“Organizing authority,” as used in the Rules, refers to the EYC (as represented through the EYCRF Fleet Officers).

“PRO” Principal Race Officer The PRO is responsible for Race Course selection and is the sole point of contact between the Race Committee (RC) and fleet competitors. A competitor or crew wishing to communicate with the RC must do so through the PRO only. Verbal communication with the RC is limited to check-in and withdrawal from a race.

A competitor or crew determined by the RC to be interfering with or harassing the RC before, during or after a race will be protested by the RC and subject to penalty under RRS #2 Fair Sailing and sportsmanship. The protest committee for such incident shall consist of EYCRF Executive Committee members. Penalties including DSQ may be assessed retroactively.

“Race Committee” or “RC” refers to the Race Committee of the EYC. The Race Committee was established by the EYC Board of Directors, and was given the duty and authority to promulgate rules governing sailing and racing for the EYC. See, EYC Bylaws, Section IV, Par. 4. As presently composed, the Race Committee consists of the EYC Fleet Captain and the following EYCRF Fleet Officers: the Fleet Chair; the Assistant Fleet Chair; the Fleet Secretary/Treasurer; the Fleet Vice Chair, and Principal Race Officer. In addition, the EYCRF Fleet Officers have created additional EYCRF offices to fulfill certain functions of the Race Committee, including: 1) the immediate past Fleet Chair; 2) the RC Boat Officer; 3) the Race Results Chair(s); 4) the Protest Chair; and 5) any other officer, chair, committee, or person who performs a Race Committee function.

“Rules” refer to the current "Racing Rules of Sailing" as adopted by the International Federation of Sailing as modified by the United States Sailing Association prescriptions.

II. ELIGIBILITY

To be eligible to race in the EYCRF, a yacht must:

- A. Carry life-saving equipment conforming to government regulations (see, Fundamental Rule 1.2 and Rule 40); **See section XX.**
- B. Have a valid current rating certificate issued by PHRF-Lake Erie or have a temporary rating certificate as provided in this Handbook;
- C. Carry the current EYCRF Race Instructions and the current Racing Rules of Sailing;
- D. Comply with Sub-paragraph A of the Yacht Entry (Section V) of this Handbook. And
- E. For purposes of PHRF racing in the EYCRF, the ISAF Sailor Classification Code will not be used.

III. TEMPORARY RATINGS

Class measurers may assign temporary ratings by issuing temporary rating certificates under the following circumstances and conditions:

- A. A yacht new to the fleet. A class measurer may issue a temporary rating certificate to be used from the time the yacht is measured until a valid rating certificate is received. Temporary ratings assigned under this sub-paragraph **will include a 10 second per mile penalty** (based on the anticipated handicap) unless the yacht owner establishes, to the satisfaction of the class measurer, that the failure to obtain a valid rating certificate was not caused by the yacht owner. A yacht owner may request a temporary rating certificate issued under this Section to be reviewed promptly by the Fleet Chair. The Fleet Chair will affirm or adjust the temporary rating assigned by the class measurer. Decisions of the Fleet Chair concerning temporary ratings will be final.
- B. Invitational races. A class measurer may issue a temporary rating certificate to an unrated yacht for calculating time and fleet positions and awarding prizes for those races only. Temporary ratings assigned under this sub-paragraph may include a penalty (based on the anticipated handicap) if the yacht owner does not establish, to the satisfaction of the class measurer, that the failure to obtain a valid rating certificate was not caused by the yacht owner.
- C. FAMILY JAM ratings will be assigned to all of those yachts without certificates by the measurer and official scorer in accordance with LE- PHRF standards. A class measurer may issue a temporary rating certificate to an un-rated yacht for calculating time and fleet positions and awarding prizes for those races only. The penalty provisions under Sub-paragraphs III.A and III.B, above, shall not apply to temporary rating certificates for FAMILY JAM races.

IV. YACHT ENTRY

- A. The following items **must** be submitted to the EYCRF Secretary **prior** to being scored:
1. An executed EYCRF application with current PHRF–LE certificate for spinnaker division.
 2. A copy of marine liability insurance coverage.
 3. Payment of the entry fee for the racing season or the individual race, as appropriate.

Entry form and required items must be received by the SECRETARY 5 days prior to a race to allow processing time in order to be scored in that race.

- B. In accordance with Rule 76.1, the organizers may refuse the entry of any yacht not within the spirit of the Rules and these Sailing Instructions as interpreted by the EYCRF Officers who also reserve the right to deny participation to any yacht or individual for unsportsmanlike behavior by any crewmember either on the water or on the grounds or in the vicinity of the Erie Yacht Club. (Modifying Rule 76).

V. OWNER'S RESPONSIBILITY

SUBJECT TO RRS 4. The Safety of a Yacht and her crew is the sole and inescapable responsibility of the yacht owner/skipper who must do his/her best to ensure that the yacht is fully found and seaworthy and manned by experienced crew who are physically fit to face bad weather. Neither the establishment of these sailing instructions, their use by the sponsoring organization, nor the inspection of a yacht in any manner, limits or reduces the complete and unlimited responsibility of the owner/skipper.

Sailing is an activity that has an inherent risk of damage and injury. Competitors in this event are participating entirely at their own risk. The race organizers (organizing authority, race committee, protest committee, host club, sponsors, or any other organization or official) will not be responsible for damage to any boat or other property or the injury to any competitor, including death, sustained as a result of participation in this event. By participating in this event, each competitor agrees to release

the race organizers from any and all liability associated with such competitor's participation in this event to the fullest extent permitted by law. A competitor is solely responsible for deciding whether or NOT TO start or to continue racing.

VI. DIVISIONS

- A. PHRF -- Open to any yacht with a current PHRF-LE rating certificate or temporary rating certificate as provided in these race instructions.
- B. JAM, FAMILY JAM --Open to any yacht with a rating assigned in accordance Sub-paragraph III.C (Temporary Ratings), above. The following restrictions shall apply:
- 1 No spinnakers of any type are permitted.
 2. Only one jib (or genoa) may be set at any time, except when changing from one to another.
 3. A single whisker pole is permitted, provided that It is no longer than the PHRF spinnaker pole dimension or the "J" dimension of the yacht, whichever is longer; and it is attached to the mast when in use.
- C. FAMLY JAM ratings in each class will be *adjusted* during the season by awarding 9, 6, and 3 second penalties respectively for the first three places at the end of each race day. Adjusted ratings will be clumlative and remain in place for the season and will be maintained by the score keeper.

VII. SCORING (Modifying RULE 89.3, Appendix A)

- A. **The low point scoring** system in Appendix A of the Rules shall apply, with the following modifications:
- 1 A minimum of three boats are required to start in a class to qualify as a race except **one boat is required to start a race to qualify as a race in the FJAM Division only.**
 - 2 A minimum of two races must be completed to constitute a completed series.
- B. **A yacht that retires** from a race shall report her withdrawal to the Race Committee Boat. Yachts withdrawing and not reporting may be disqualified. In the event the Race Committee Boat cannot be reached, a retiring yacht must report to another boat in her class.
- C. **Series scoring** will be calculated in accordance with Appendix A of the Rules. However, this will not apply to the EYCRF Boat of the Year series and/or series scoring established by deed of gift (e.g., the Zurn Trophy). The EYCRF Boat of the Year series scoring is set forth in Section VIII .
- D **Scoring within Time Limits**
1. Races with stated time limits: The first yacht in each class must finish within the designated time limit in order for the race to be scored. Each class is considered separately.
 2. Races without stated time limits: All yachts still racing after the RC determines the race to be complete will be scored equal to the number boats that have finished in class plus one.
 3. All F-JAM LIGHTHOUSE start races have a two hour time limit beginning with the starting signal of each class . All yachts still racing when the time limit expires will be scored equal to the number of finishers in their class plus one.

VIII. BOAT of the YEAR, CLASS CHAMPION SCORING and AWARDS

A. PHRF Division. The EYCRF Boat of the Year for the PHRF spinnaker division will be determined by counting the best **10 of the 12** races noted on the Official Race Schedule as Boat Of the Year races or the best 80% rounded to the closest whole number if less than **12** races are completed. Class Champions may also be awarded as noted here.

2016: $.8 \times 12 = 9.6 = \text{rounded up to } 10$. Use the best 10 races.

B. FAMILY JAM Division may be divided into classes. A Class Champion will be determined in each class by the yacht with the best score when using **70%** (rounded to the closest whole number) of the completed races in each class.

2016: $.7 \times 18 = 12.6$ rounded up to 13 races. Use the best 13 races.

C. The Zurn Trophy will be awarded to eligible yachts that must have a **fixed inboard engine** as provided by the Deed of Gift. The trophy is awarded to encourage season long racing participation with the exclusion of 40% of the races. Short races are weighted one "race point", and long races (underlined on the race schedule) are weighted two "race points". The "race points" are rounded to the closest whole number. The EYCRF Official Race Schedule designates the races and weighted scoring for the purpose of awarding the Zurn Trophy.

2016: There are 11 long and 15 short races which equals 37 "race points". Using the best 60% of the races held or $.6 \times 37 = 22.2$ (rounded to nearest whole number) equals 22 "race points". The best 22 "race points" will be used to determine the winner of the Zurn Trophy. Note: Race points are not the same as an individual race score.

D. Participation awards. Any yacht that participates in less than 50% of its class races held shall not be entitled to receive a season participation award.

E. Perpetual trophies in all classes will be awarded according to their respective deeds of gift.

IX. RULES

Races will be sailed under the currently approved Racing Rules of Sailing, as modified by these Sailing Instructions. Racing After Sunset -- If races start or continue after sunset, the Right of Way Rules of Part 2 are superseded between sunset and sunrise by the International Regulations for Preventing Collisions at Sea (see, Introduction to Part 2 of the Rules).

X. NOTICES TO COMPETITORS

Every reasonable effort will be made to provide Notices to Competitors prior to the day of the race. In any event, Notices to Competitors will be posted on the bulletin board at the EYC at least 90 minutes before the start of the race. Competitors shall be responsible for checking the bulletin board. Note: If changes are made too late to be sent, the Notice will be posted on the EYC bulletin board at least 90 minutes before the start of the race, and the Race Committee Boat shall fly the "Come Within Hail" flag prior to the preparatory signal.

XI. CHANGES IN SAILING INSTRUCTIONS

Changes in sailing instructions shall be In writing and signed by the Fleet Chairperson or his/her designate posted and sent as a "Notice to Competitors"

XII. RACE SCHEDULE

The Official Race Schedule is printed **only** in these Sailing Instructions. Other versions may contain inaccurate information and therefore are not considered official. Changes in the official schedule will be issued as a "Notice to Competitors".

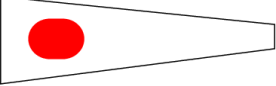
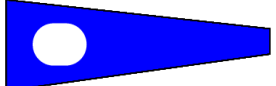
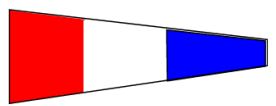
XIII. COURSES AND MARKS

- A. The race schedule for PHRF SPINNAKER will include point to point and course races. All scheduled bay course and lake course races will be set by the Race Committee in cooperation with the Principal Race Officer to the best of their ability. The Race Committee shall note the type of course chosen with the race results.
- B. Presque Isle Bay course races -- The location of permanent race marks and corresponding courses for bay races will be sent as a Notice to Competitors. See Bay Mark Designation Diagram in this handbook.
- C. Lake course races -- Races will be set in Lake Erie with the course to be set approximately 2 nautical miles northeast of the harbor entrance. See course configurations page for course diagrams. The race committee will use inflatable marks for lake course races.

XIV. THE START

- A. Except for Family JAM Lighthouse starts, Starts will be in accordance with Rule 26.
- B. All signals will be made from the Race Committee Boat (or from shore in special cases -- e.g., lighthouse races) stationed at one end of the starting line.
- C. The starting line will be between a **staff** displaying a yellow flag on the race committee boat and the **starting mark**.

The following colored pennant will designate each class for starting purposes. Two or more pennants may be flown simultaneously to combine starts:

SPINNAKER A = NUMERAL ONE PENNANT	
SPINNAKER B = NUMERAL TWO PENNANT	
JAM = NUMERAL THREE PENNANT	

FAMILY JAM CLASS A

FAMILY JAM CLASS B

FAMILY JAM CLASS C

FAMILY JAM CLASS D

YELLOW

LIGHT BLUE

ORANGE

PURPLE

D. CHECK-IN Each yacht must pass near the stern of the Race Committee Boat on starboard tack (or the EYC lighthouse, as appropriate) prior to the first preparatory signal in order for the sail number to be recorded and the yacht acknowledged. Failure to comply may result in the yacht being recorded as a "Did not Start" in the Race Committee's sole discretion. Each boat must fly their assigned FJAM class pennant designating its class. Boats without class pennants will not be scored.

E. GENERAL RECALL RRS # 29.2 When at the starting signal the race committee is unable to identify boats that are on the course side of the starting line or to which rule 30 applies, or there has been an error in the starting procedure, the race committee may signal a general recall (display the First Substitute with two sounds). The warning signal for a new start for the recalled class shall be made one minute after the First Substitute is removed (one sound), and the starts for any succeeding classes shall follow the new start.

XV. THE FINISH

The finish line will be between a finish mark in the water and a staff displaying a yellow flag on the Race Committee Boat, or as otherwise specified for point-to-point races.

If the Race Committee is not on station (as in the finish of some long distance races), each yacht is required to: (modifying Rule 34 and the US Sailing prescription)

1. Record the name of the yacht ahead and the approximate time the yacht ahead finished;
2. Record its own finish time and elapsed time;
3. Record the name and finish time of the yacht behind; and
4. Complete and submit a Finish Form as provided in this Handbook. All information must be filled out, including hours, minutes, and seconds. Finish Forms must be turned in at EYC as soon as possible, but not later than **TWO** hours after the reporting yacht finishes the race. If no Race Committee Officer is present, Finish Forms must be returned to the race results bulletin board at the EYC. **Yachts failing to record all finishing information under this Section will be subject to disqualification or alternate penalty at the discretion of the Fleet Officers.**

XVI. SHORTENING OF COURSE

A race course may be shortened at a course mark. The finish line will be between a **staff** displaying a yellow flag on the Race Committee Boat and the **course mark**. Shortening of the course will be conducted in accordance with Racing Rule 32.

XVII. TIME LIMITS

There shall be no stated time limits for bay course races or lake course races. The RC and the PRO may determine the completion point of a race when required by darkness or sea conditions. The RC will indicate that time has expired or the race has ended by lowering the Blue RC Flag signaling that the time limit has expired. The RC may also announce that the time limit has expired and race has been ended as a courtesy. Time limits for other races are indicated on the respective race charts in this Handbook and apply to each Division i.e. Spinnaker or JAM. Special time limits apply to Family Jam Lighthouse Races. See scoring VII, D.

XVIII. PROTEST REQUIREMENTS (Modifying RULE 61 and 61.4)

- A. The Protest Committee Chair shall appoint committees who shall consist of at least three judges, as follows: a Protest Committee Chairperson and at least two additional judges.
- B. Protests forms must be hand delivered to a Race Committee Officer within two hours of the time the RC boats docks or in the absence of a finish RC boat, **2hrs** after the last boat finishes.

IXX. RESULTS

Race results will be posted as soon as possible after the completion of each race. Summaries of results will be posted on the official EYC bulletin board and the EYC web site.

The scoring committee chairman will maintain season class results. Tentative race results will be e-mailed a.s.a.p. after races as a convenience to competitors. The Official results will be posted on the fleet bulletin board at the EYC.

XX. REQUIRED SAFETY EQUIPMENT & PROCEEDURE

- A. In addition to complying with Fundamental Racing Rule 1.2 and Rule 40, yachts must carry life-saving and other equipment conforming to current government regulations. All vessels racing EYC Racing Fleet events shall comply with the Racing Rules of Sailing, USCG regulations and PHRF-LE class rules. Compliance with ISAF OFFSHORE SPECIAL REGULATIONS Race Category 4 is recommended for offshore races.
- B. A yacht's or competitor's failure to carry life-saving and other equipment conforming to current government regulations, as determined by the appropriate government agency, shall constitute grounds for protest and/or disqualification.
- C. Each yacht must carry a functional VHF Radio.
- D. CHECK-IN Each yacht must pass near the stern of the Race Committee Boat on starboard tack (or the EYC lighthouse, as appropriate) prior to the first preparatory signal in order for the sail number to be recorded and the yacht acknowledged. Failure to comply may result in the yacht being recorded as a "Did not Start" in the Race Committee's sole discretion.
- E. Any yacht retiring from a race must notify the RC and receive acknowledgement from the RC.

XXI. COMMUNICATIONS

- A. RADIO - The Race Committee shall utilize marine VHF **Channel 72** to broadcast courtesy information to competitors. Courtesy radio transmissions are not subject to scoring re-dress.
- B. CELL PHONES. A boat shall neither make radio transmissions while racing nor receive radio communications not available to all boats. This restriction also applies to mobile CELL phones and satellite communications. Use for emergency purposes is permitted.
- C. COMPUTER SOFTWARE - In order to standardize electronic communications and documents within the fleet, *MS Word and MS Excel* with Adobe readable versions have been chosen for word processing and spreadsheet documents by the fleet.
- D. TIME – GPS - Global Positioning System time shall be used as the standard by the RC and competitors.

COURSE DESIGNATIONS and MARKS

COURSE CONFIGURATION: The Race Committee will display a board on the aft rail of the boat for around the buoys races designating the first heading and course. The first three digits will be numbers (in red) signifying the approximate compass heading to the first mark. The fourth digit will be a letter (in black) signifying the course configuration, using the letters 'A' through 'D', as set forth below.

COURSE DISPLAY BOARD EXAMPLES

182 [RED]	A [BLACK]
FIRST MARK	WINDWARD - LEEWARD

270 [RED]	B [BLACK]
BEARING TO FIRST MARK	3 LEGS WINDWARD - LEEWARD - WINDWARD

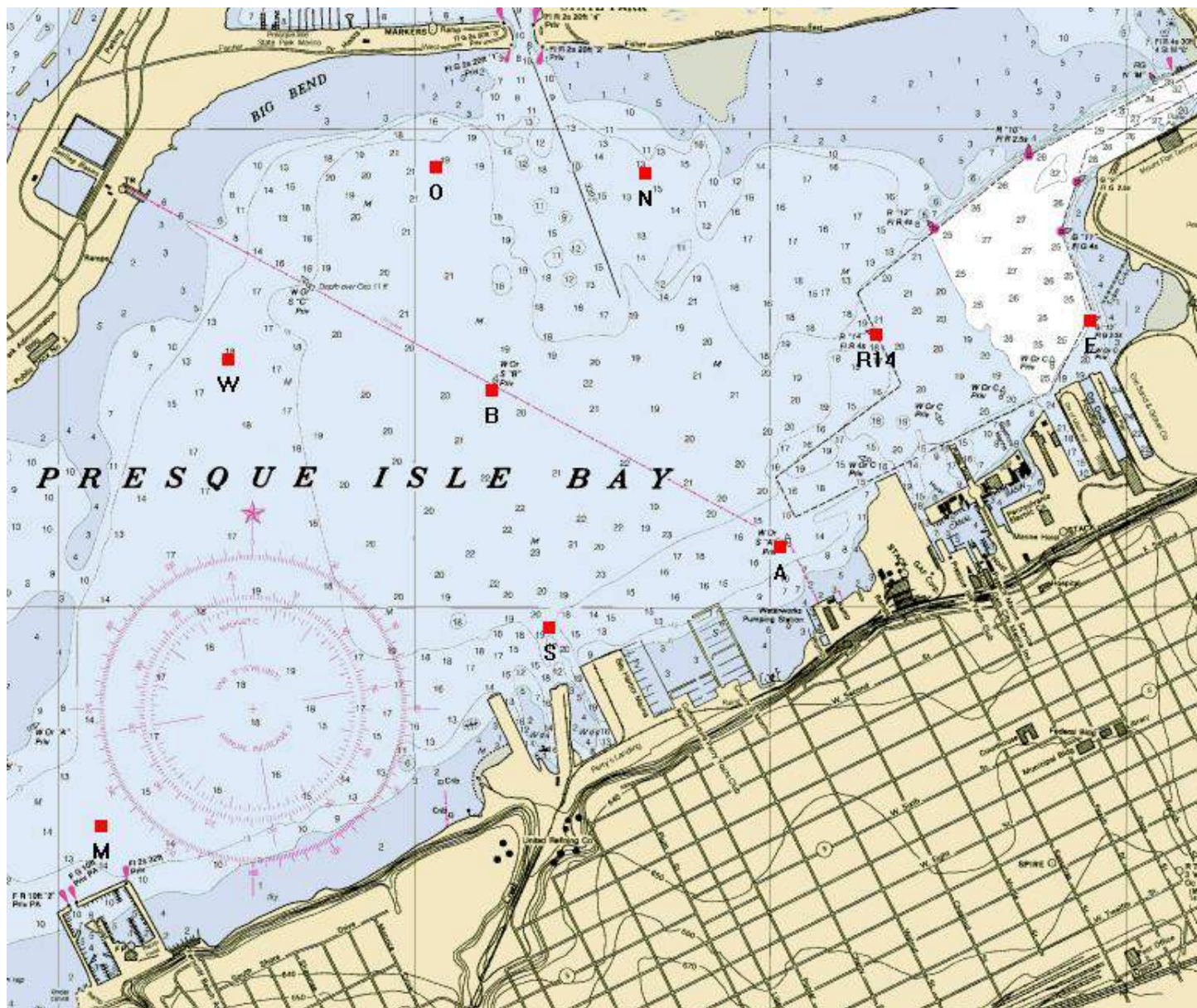
010 [RED]	C [BLACK]
BEARING TO FIRST MARK	4 LEGS WINDWARD - LEEWARD - WINDWARD - LEEWARD

010 [RED]	D [BLACK]
BEARING TO FIRST MARK	5 LEGS WINDWARD - LEEWARD - WINDWARD - LEEWARD - WINDWARD

MARKS: The marks of the course will be displayed on the transom display board of the RC boat in the order to be rounding. Examples: **T - Y** or **T - Y - T** or **M - R14 - W** or **T - S - Y**
COURSES may include both temporary and permanent marks. The temporary marks will be inflatable marks designated as "T" or "Y". The **Windward mark** will be an **ORANGE** inflatable mark designated "T" or one of the permanent marks listed on the mark chart for races within Presque isle bay. The **Leeward Mark** will be a **YELLOW** inflatable mark designated as "Y". In the case of a triangular course, the **Jibe Mark** will be either an **ORANGE** inflatable mark "T" or one of the permanent marks. Weather marks will be reset or changed if a substantial wind shift occurs (approximately 15 degrees or more) when possible by the Race Committee. If movement is not possible, the race may be abandoned and restarted.

DISTANCES will be verified by use of the Race Committees GPS. The Race Committee will set courses that can be sailed in approximately two (2) hours or less in the prevailing conditions, or for approximately three (3) hours of total sailing time if two (2) races are scheduled. The Race Committee may shorten a race when necessary to complete a race in the time specified above. Races will be shortened in accordance with section XVI.

PERMANENT BAY MARK IDENTIFICATION



LAT - LON LOCATIONS ARE PUBLISHED ON A SEPARATE DOCUMENT

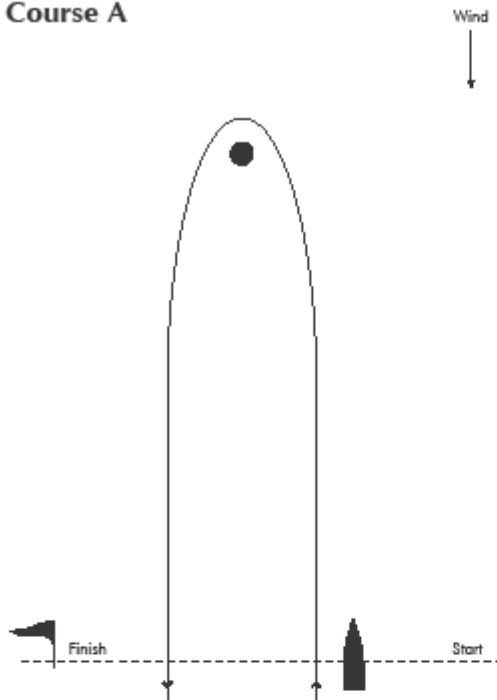
RACE COURSE CONFIGURATIONS

COURSE – ALPHA - 2 legs

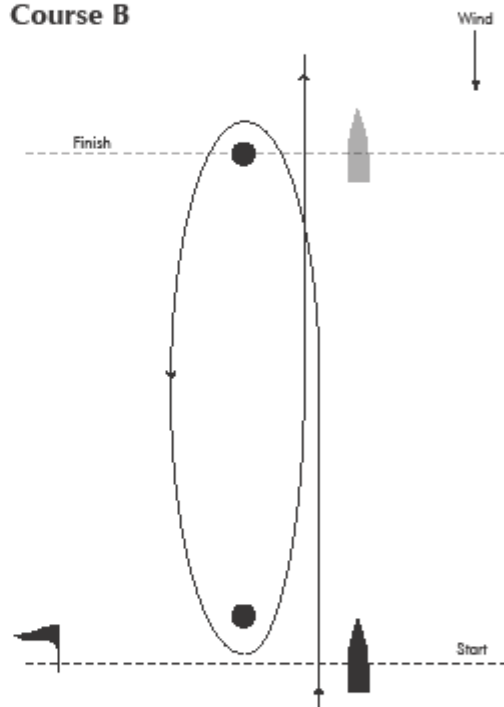
COURSE – BRAVO - 3 legs

COURSE – CHARLIE - 4 legs

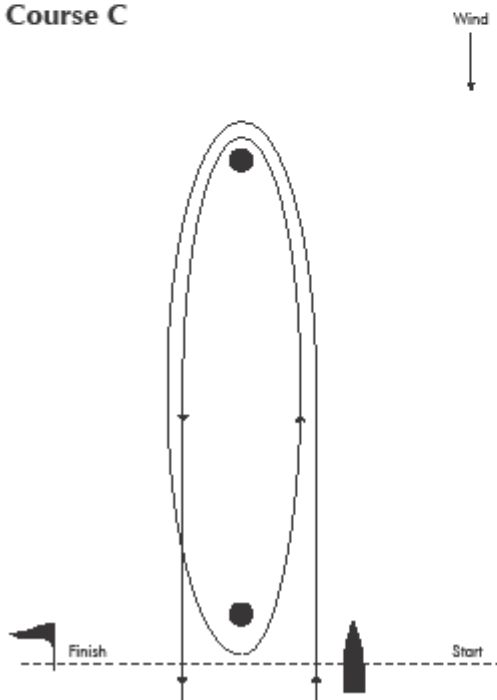
Course A



Course B

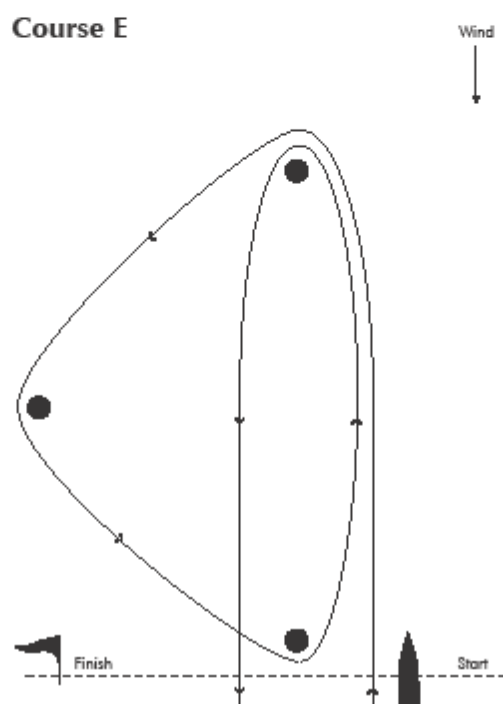
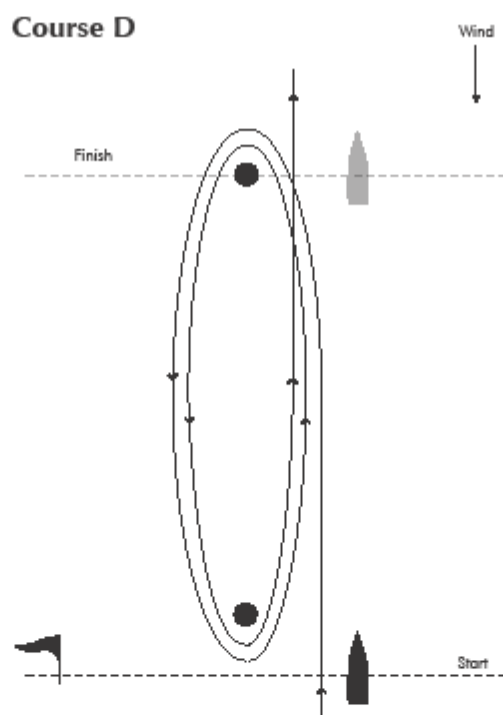


Course C



COURSE – DELTA - 5 legs

COURSE – ECHO triangle + windward + leeward leg



Memorial Day Light House Race

Distance: approx. 12.22nm *

Course: EYC LH - G1- WB-R2

Marks G1 and WB are to be passed to Port.

G 1: approx N° 42, 09.827' W° 080, 03.180'

Weather Buoy, WB exact position is subject to annual change. Actual location and race distance* will be published prior to race.

Start: EYC lighthouse start/finish line.

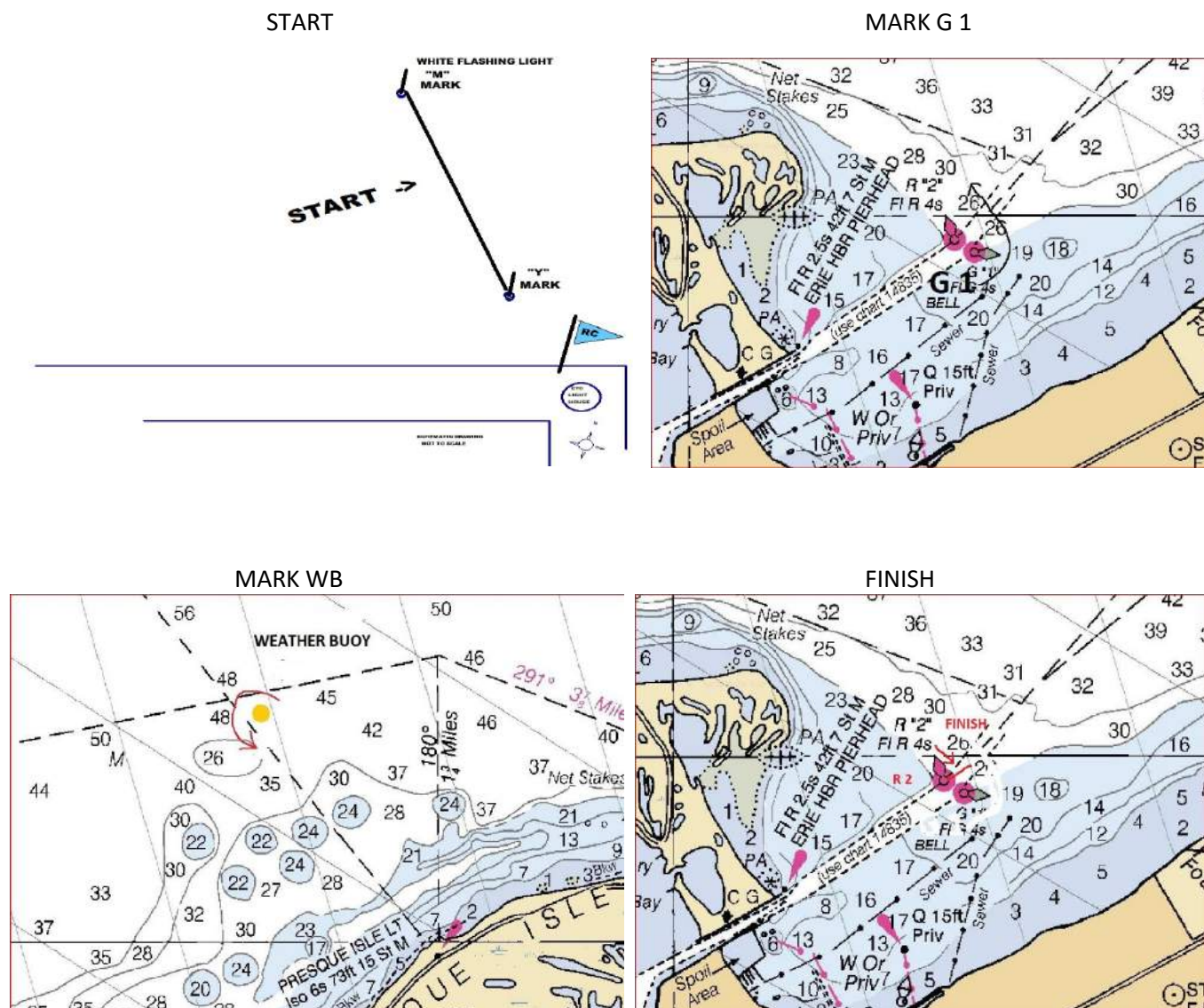
Finish: Between R2 and the RC.

If the RC is not on station, finish within one boat length of R2 leaving R2 to STARBOARD.

The finish line is a projection of a line from the channel lighthouse through R2.

Record your own time and the time of the boat behind as required in Section XV, 4 on page 13.

Time limit: 5 hours for the first boat



Night Light House Race

Distance: 15.67nm *

Course: EYC LH - G1 - WB - EYC LH

Marks G1 and WB are to be passed to Port.

G 1: aprox N° 42, 09.827' W° 080, 03.180'

Weather Buoy, WB exact position is subject to annual change. Actual location and race distance* will be published prior to race.

Start: EYC lighthouse start/finish line.

Finish: EYC lighthouse start/finish line.

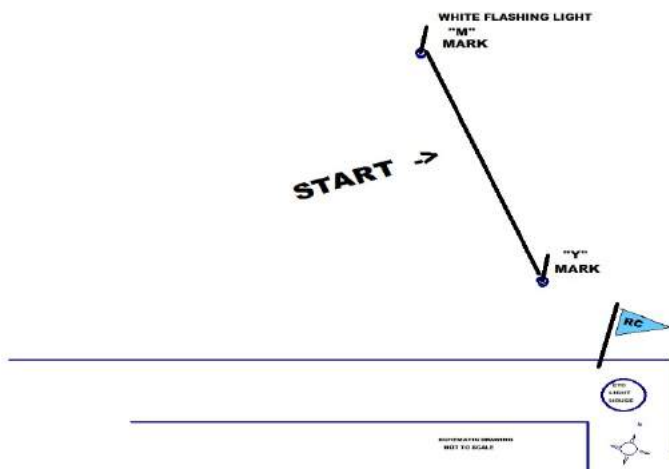
Check in with the RC as you finish and make sure the RC can view your sail numbers.

If the RC is not on station, record your own time and the time of the boat behind on the provided Finish Form as required in Section XV, 4.

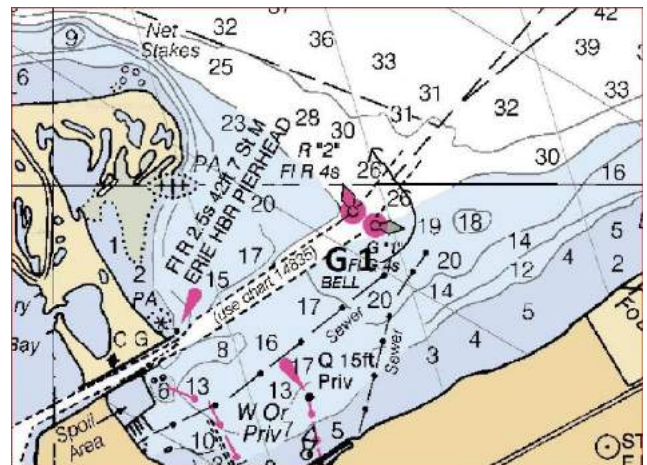
Time limit: 6 hours for first boat.

REMINDER – The right of way rules change at sunset.

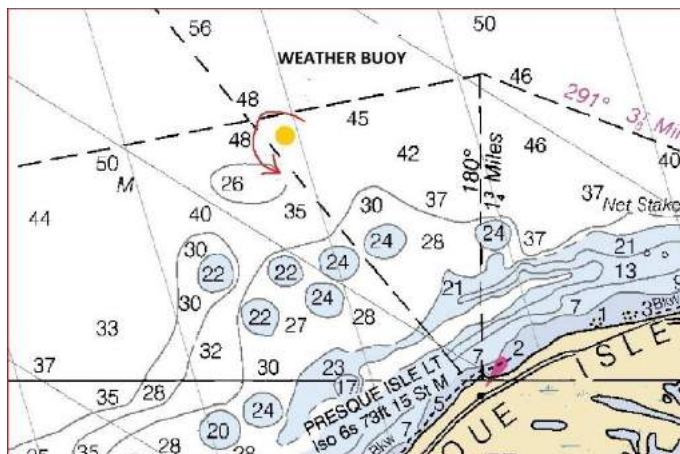
START



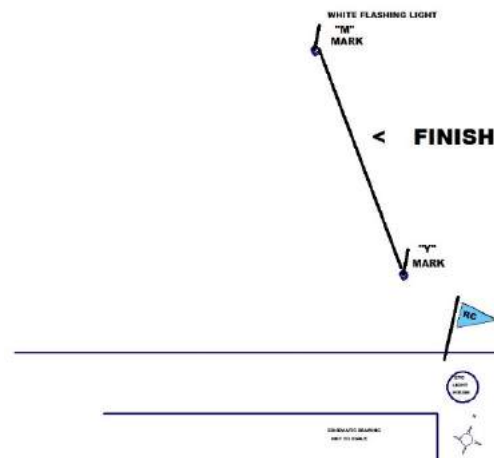
MARK G 1



MARK WB



FINISH



PORT DOVER RACES

ERIE TO PORT DOVER

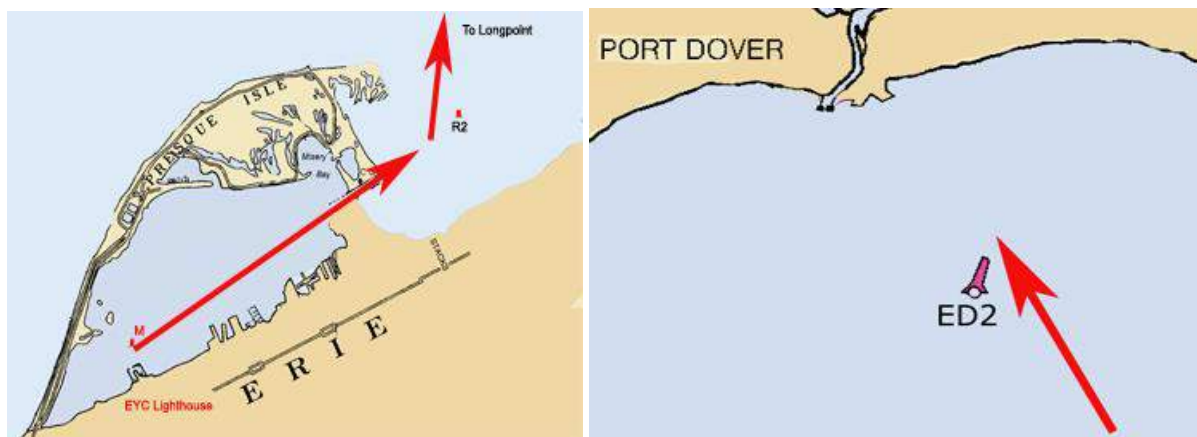
DISTANCE: 41.6 NM

COURSE: EY

TIME LIMIT: 14 HOURS for first boat

START: EYC LIGHTHOUSE. NOTE YOUR CLASS GPS START TIME FOR FINISH FORM.

FINISH: WITHIN ONE BOATLENGTH OF ED2 LEAVING ED2 TO **PORT**.



APPROXIMATE LAT/LON : **ED2: N-42° 45.82 W-080° 11.72**

R2: N-42° 09.86 W-080° 03.26

Alternate Start at R2: DISTANCE: 37.7 nm 13 HR TIME LIMIT for first boat

PORT DOVER TO ERIE

DISTANCE: 37.7 NM **COURSE:** ED2-R2 **TIME LIMIT:** 13 HOURS FOR 1ST BOAT

START: NEAR FAIRWAY BUOY ED2 FOR ALL CLASSES.

NOTE YOUR CLASS GPS START TIME FOR THE FINISH FORM.

FINISH: WITHIN ONE BOAT LENGTH OF R2 LEAVING R2 TO **PORT**. TAKE YOUR OWN TIME AND THE BOAT BEHIND FOR THE FINISH FORM.

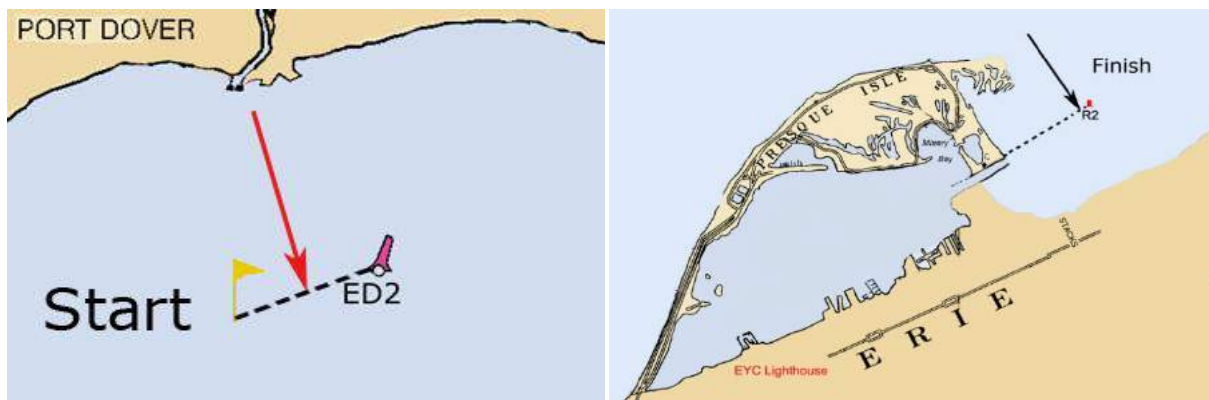


Chart Courtesy of Russ Thompson

KOEHLER CUP - Erie to Ashtabula

Distance: 36.62 miles

Time Limit: 13hrs for first boat.

Start: Lake Mark R2

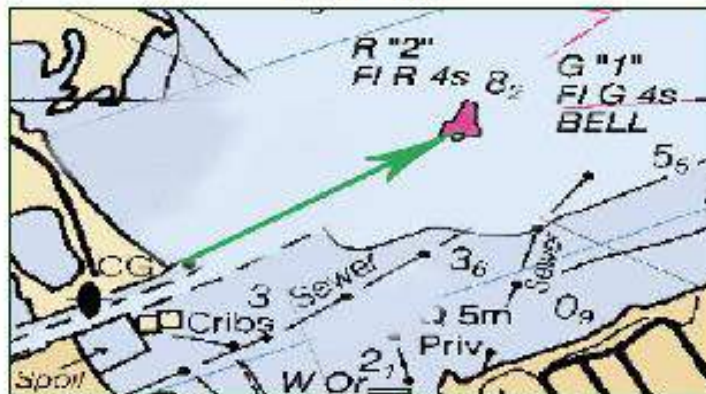
N 42 09 930 W 080 03 26 aprox.

Finish: Ashtabula East Pier Light

N 41 55 248 W 080 47 55 aprox.

The Start: The line is between R2 and the yellow flag on the committee boat. If the committee boat is not on station the start line is a line between R2 and the north channel wall light house.

Start "R2"



The Finish: within 4 four boat lengths of the east pier light at the Ashtabula harbor entrance. The finish line is set at magnetic north thru the pier light. You are on the line when the pier light bears 180° on your compass. Take your own time and record the time of the boat behind you using the finish form provided.

Finish at Ashtabula east pier light



KOEHLER CUP - Ashtabula to Erie

Distance: 36.62 miles Time Limit: 13hrs for first boat.

Start: Ashtabula Pier light

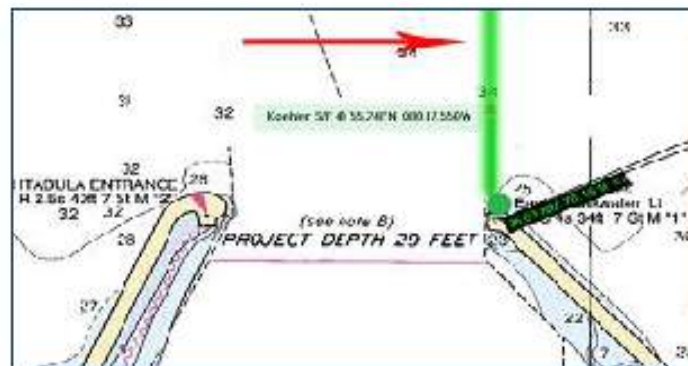
N 41 55 248 W 080 47 55 aprox.

Finish: Lake Mark R2 to Starboard

N 42 09 930 W 080 03 26 aprox.

The Start: In the absence of a race committee, the start line is a line set @ 180° magnetic to the Ashtabula Pier Light located on the East Seawall of the Harbor Entrance.

Start at Ashtabula Light



FINISH: within 1 boat length of buoy "R2" outside the harbor entrance leaving "R2" to **Starboard**. The finish line is an extension of a line from the north pier channel lighthouse through "R2".

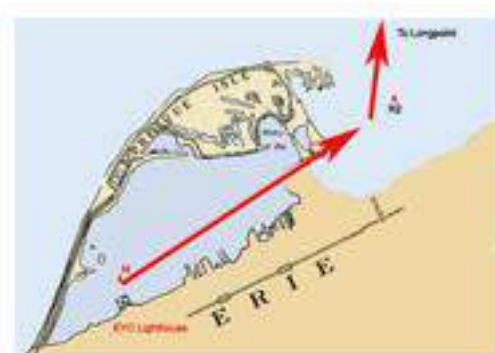


BLUFF BAR RACE for the WOLFORD TROPHY

EYC - Bluff Bar – Port Dover

Distance: 43.2 nm

Time Limit: 14 hrs for first boat.



Erie - Start



Bluff Bar



Dover-Finish

Charts courtesy of Russ Thompson

COURSE: “EYC”-“EAII”-“ED2”

START: EYC Lighthouse start line

MARKS: “EA II” (Bluff Bar) Leave to **STARBOARD** N 42° 35.75 W 080° 09.55
aprox

FINISH: ED 2 (Port Dover) Leave to **PORT** N 42° 45.82 W 080° 11.72 aprox

THE STARTING LINE IS A LINE BETWEEN “M” AND THE YELLOW STAKE OFF OF THE EYC LIGHTHOUSE.

THE FINISH: FINISH WITHIN ONE BOAT LENGTH OF ED2 LEAVING ED2 TO **PORT.**

TAKE YOUR OWN TIME AND RECORD THE TIME OF THE BOAT BEHIND YOU USING THE FINISH FORM.

Alternate Start at R2: DISTANCE: 37.7 nm 13 HR TIME LIMIT for first boat

FAMILY JAM LIGHTHOUSE START RACE INSTRUCTIONS

These instructions modify the Racing Rules of Sailing and apply only to Family Jam Races starting at the EYC lighthouse. They DO NOT apply to any other JAM, FAMILY JAM or SPINNAKER races.

RACES STARTING AT THE EYC LIGHTHOUSE

These races start and finish near the Erie Yacht Club Lighthouse at the start/finish line and are noted on the schedule as LH. The Race Committee will be located on the EYC lighthouse deck, not on the *Flagship*. The courses will be posted on the Course Board located on the north wall of the EYC. The start/finish line is always between the “M” mark and “Y” mark next to the Lighthouse.

The **STARTING LINE** is between “M” mark to Port and the Y mark to Starboard.
The **FINISH LINE** is between “M” mark to Starboard and the Y mark to Port.

CLASSES & STARTING SEQUENCE:

Each boat must fly their assigned class pennant designating its class. Boats without class pennants will not be scored. The classes may start in any sequence as noted by the race committee e.g. C, D, A, B.

Each yacht must pass near the lighthouse on starboard tack prior to the first preparatory signal in order for the sail number to be recorded and the yacht acknowledged. Failure to comply may result in the yacht being recorded as a “Did not Start” in the Race Committee’s sole discretion.

GENERAL RECALL

RRS #29.2 When at the starting signal the race committee is unable to identify boats that are on the course side of the starting line or to which rule 30 applies, or there has been an error in the starting procedure, the race committee may signal a general recall (display the First Substitute with two sounds). The warning signal for a new start for the recalled class shall be made one minute after the First Substitute is removed (one sound), and the starts for any succeeding classes shall follow the new start.

COURSES

All races start and finish at the EYC lighthouse start/finish line. The RC will announce the course to be sailed via marine radio prior to the warning signal. The courses will be designated by the letter designation for each mark of the course to be rounded in the order stated. Examples are: O-S, S-R, R-N, R, S. Port or Starboard mark rounding will be designated by the RC with **RED** or **GREEN** flags.

Note that the course may not be the same for all classes to insure that all classes finish within the time limit. The Principal Race Officer (PRO) will make the appropriate course selection and notify the RC. The PRO criteria for course selection are to sail at least one windward leg and have all boats in each class finish within the time limit. Note that the RC is in a fixed position therefore the opportunity to shorten a Lighthouse Start race is not available. See start/finish area chart below.

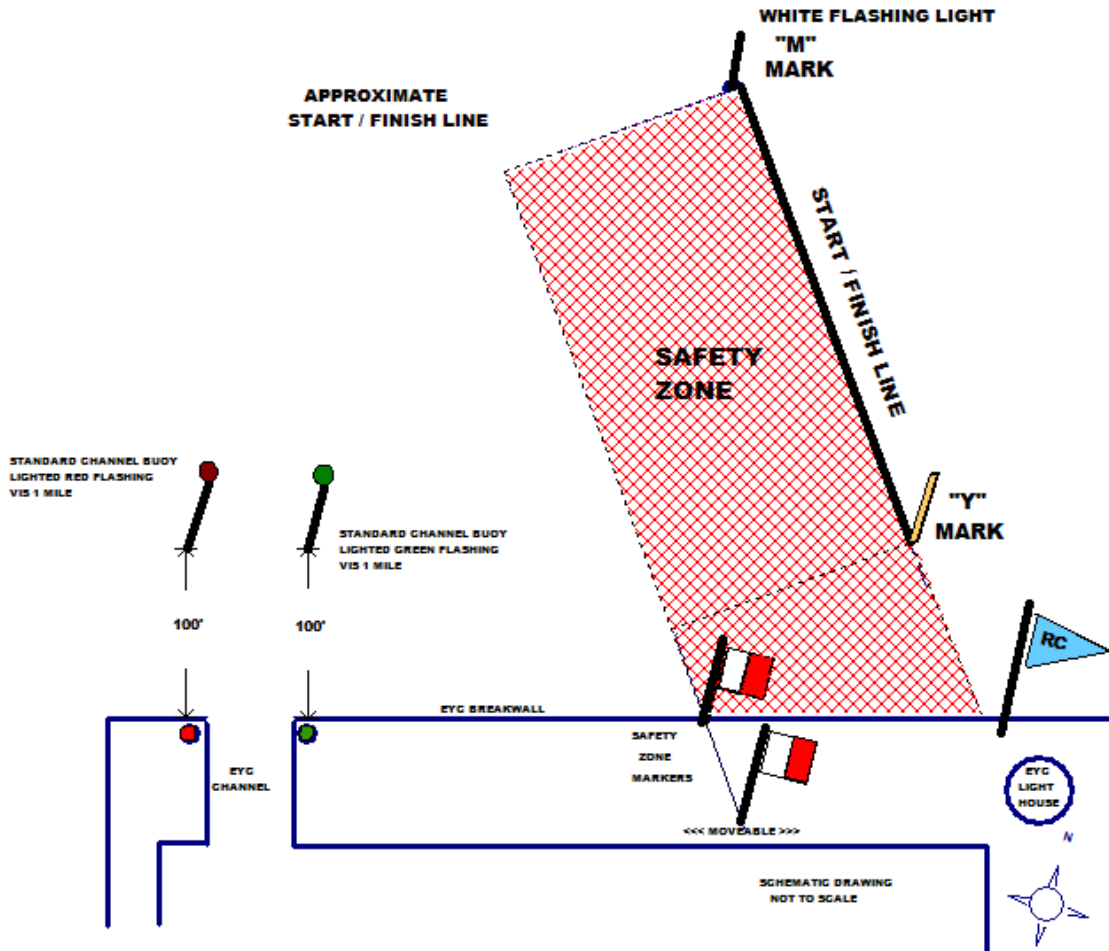
TIME LIMIT and SCORING

The time limit for every Lighthouse Start race is 2 hours from their individual class starting signal. All boats still racing when the two-hour time limit expires will be scored equal to the number of finishers in their class plus one. One boat is required to start a race to qualify as a race in the F-JAM Division only.

SAFETY ZONE

This is a rectangular or nearly rectangular area established west of the Start/Finish Line. This Safety Zone is bounded on the north and south by the starting line marks and the EYC brake wall, on the east by the start/finish line and on the west by a Red & White markers located on shore. Boats are permitted in the Zone only during their class 5 minute starting sequence. Boats in the Zone out of sequence are subject to immediate disqualification. After the Finish, the Zone is to be cleared immediately to allow room for the following finishers.

FAMILY JAM LIGHT HOUSE START / FINISH LINE





YACHT FINISH FORM
ERIE YACHT CLUB RACING FLEET



Form to be completed when the Race Committee is not on station at the finish line.

please circle SPINNAKER or JAM

REPORTING YACHT
SAIL NUMBER
TIMEKEEPER
PHONE #

YACHT AHEAD: _____

GPS TIME

	HOURS	MINUTES	SECONDS
SAIL # _____			
APPROX. TIME AHEAD			

YOU

GPS TIME

CLASS START TIME:			
YOUR FINISH TIME:			
ELAPSED TIME (Computer will calculate)			

YACHT BEHIND: _____

GPS TIME

SAIL # _____			
FINISH TIME:			

SKIPPER SIGNATURE _____

Race Date _____

BOATS WITHOUT A FINISH FORM RECEIVED WITHIN THE TIME LIMIT WILL BE SCORED DNF.
Email and other media messages are not acceptable.
Submit form to RC or scorer as soon as possible, but no later than 2 hours after your finish time.
Placed form in the EYC race bulletin board if no RC member is present.



YACHT FINISH FORM
ERIE YACHT CLUB RACING FLEET



Form to be completed when the Race Committee is not on station at the finish line.

please circle SPINNAKER or JAM

REPORTING YACHT
SAIL NUMBER
TIMEKEEPER
PHONE #

YACHT AHEAD:

	GPS TIME		
	HOURS	MINUTES	SECONDS
SAIL # _____			
APPROX. TIME AHEAD			

YOU

	GPS TIME		
CLASS START TIME:			
YOUR FINISH TIME:			
ELAPSED TIME (Computer will calculate)			

YACHT BEHIND:

	GPS TIME		
SAIL # _____			
FINISH TIME:			

SKIPPER SIGNATURE _____

Race Date _____

BOATS WITHOUT A FINISH FORM RECEIVED WITHIN THE TIME LIMIT WILL BE SCORED DNF.
Email and other media messages are not acceptable.
Submit form to RC or scorer as soon as possible, but no later than 2 hours after your finish time.
Placed form in the EYC race bulletin board if no RC member is present.